

Marleycote Bulls for Sale 2020

We have bred Ayrshires for over 30 years, our emphasis is on type and longevity, but they must be able to milk! We aim for a herd average of 8 lactations with an average yield of 8000 litres and the cows all to be classified VG or EX!

Herd Average 7,843 litres @4.21 Fat, 3.46 Protein.

At Marleycote the cows are fed a simple ration of grass silage and whole crop silage in winter and grazed grass with grass silage buffered when needed and fed to yield in the two Lely A3 robots.

Current herd classification

20 EX, 25 VG, 23 GP, 8 G.

In the autumn of 2017, we bought a couple of cows from the world renowned Changue herd from Ayrshire, impressed with their performance we bought over 40 milkers privately and at Robert's dispersal. The Changue cow's yields have suffered due to a few years of wet seasons leading to limited forage supplies at their old home, since arriving here yields have jumped to match my own cows, and in most cases, exceeded that of my cows!

In partnership with Robert Stevenson (Changue) we took his entire embryo inventory and are currently implanting them at Marleycote (over 150 implanted so far). Although some of these are over 20 years old, conception rates are over 70%. The resulting calves have full siblings with many completed lactations and progeny on the ground, giving me even more confidence in the genetic potential, hopefully we will take semen from most of these older bulls this summer before they become available to sell.

Pedigrees: The current pandemic has caused a delay in the processing of DNA samples in the UK. We are expecting their results in the next couple of weeks (all bulls have to be DNA tested before registration is approved).

Bulls	Ear Tag
Marleycote Legend	107248 702283
Marleycote Leroy	107248 102277
Marleycote Celebration	107248 202285
Marleycote Celebrity	107248 602282
Marleycote Councilor	107248 602303
Marleycote Magician	107248 602289
Marleycote Mercury	107248 702304
Marleycote Majestic	107248 602310
Marleycote Canaletto	107248 102312
Marleycote Cipriani	107248 502309
Marleycote Max	107248 702346
Marleycote Performer	107248 402322
Marleycote Poltergeist	107248 502323
Changue Crystal Maze	107248 402231

Marleycote Legend born 25 May 2019 – HB 037191604

Ear tag: 107248 702283

Legend est. figures: PLI £191, +344 milk, +16 fat, +9.7 protein and a type merit of +1.46

Dam: M Sea Lily 23 EX90 (Superior Production Award)



Dry after her 3rd Lactation

- Gave 10,675 in 305 days @ 4.78 fat and 3.56 protein
- Production Index of 141

PLI: £285

Show Record:

- Breed Champion at Great Yorkshire Show 2019 & 2017
- Interbreed Champion Northumberland Show 2017

4th Generation VG/EX

G Dam: M Sea Lily 14 EX94(2) 1 Star Brood Cow

Averaged 9,436 litres @ 4.5 fat and 3.1 protein

Bred 4 VG and 1 EX progeny

Show Record:

- Won numerous show championships in England and then in Northern Ireland post private sale.

GG Dam: M. Sea Lily 2 VG88 – gave 60 Ton in 6 lactations

GGG Dam: M. Sea Lily EX93 3E, 2 Star Brood Cow – bred 5 VG and EX progeny

Sire: Changue Stadium

PLI: £97 - +100 milk and 4.7 fat

+2.1 type

+2 mammary

+1.3 legs and feet

Current No. 1 type bull in the breed

Marleycote Leroy born 23rd May 2019 - HB 037191605

Ear tag: 107248 102277

Dam: M. Sea Lily 18 EX91 (2) – Superior Production Award



Just dry after 6th lactation – 9,722 @ 2.95 – 3.38 (twins)

PLI: £143, +411 milk, +4.2 fat and +14.7 protein

60 Ton of milk in 6 lactations

G Dam: Wasn't scored

GG Dam: M. Sea Lily 4 EX93 2 – LP60

GGG Dam: M. Sea Lily EX93 2, 2 Star Brood Cow

Sire: Changué Fiord

PLI: £7, -116 milk, +1.1 Fat and +2.2 Protein

He tends to breed deep wide chested cows

Sire's Dam: Carrie 26 EX91 2E

3 generations VG/EX

Yield of 7,837, 5 Fat and 3.7 Protein

Video Link: [Leroy](#)

Marleycote Celebration (born 25th May 2019) and Celebrity (born 24th May 2019) - Full ET Brothers (mixed flush pedigree pending DNA)

Ear Tags: Celebration – 107248 202285, Celebrity – 107248 602282

Both bulls are full/half-brothers to Celandine 67 – PLI £301, +599 Milk, +14 fat and +20.5 Protein

Half-brothers to Changue Backup EX92 – PTA 99, +223 Milk, +9.4 Fat, +6.7 Protein

Dam: Changue Celandine 35 VG89, 2 Star Brood Cow

PLI: £43, yield to 9,052, 3.66 Fat and 3.39 Protein

PI: 116

Bred 5 VG/EX progeny:

- Celandine 54 VG87
- Celandine 64 EX92
- Celandine Maggie VG86
- Celandine 78 EX2
- Changue Backup EX92

G Dam: Changue Celandine 21 VG, 4 Star Brood Cow, 80 Ton



Possibly one of the best known of the Changue herd being the dam of:

- Changue Tryst
- Celandine First Lord
- 6 other bulls plus 14 females including the 92 point Celandine 52 and the VG86 Celandine 72

Sire: Trident

Bred big, deep bodied, open ribbed cows with wide rumps

OR

Sire: Derick

Wasn't used heavily in the breed so limited progeny

Video Link: [Celebration & Celebrity](#)

Marleycote Councilor born 26th June 2019

Ear Tag: 107248 602303

Same Dam as M. Celebrity & M. Celebration

Sire: Mr. Hurl-Three Momentum Red

PLI: £21, +770 Milk, +8.9 Fat and +17.4 Protein

Sire of many well-known bulls including:

- SFL Fabulous Monet Red
- SFL Shandy Red
- SFL Lyon Red
- Fyn AKS
- Ron-Non Mario Red

As well as being the grandsire of Ja Bob Jordan Red.

Video Link: [Councilor](#)

Marleycote Magician born 28th May 2019

Ear Tag: 107248 602289

Half-brother to Changue Orcadian – PLI: £202, +232 Milk, +6.7 fat and +10.1 Protein

Dam: Changue Melanie 28 EX90

Yields to 7,622 @4.18-3.39

Bred 2 VG daughters

Flushed heavily

4 Bulls

G Dam: Changue Melanie 11 EX

Bred 2 EX and 1 VG daughters

5 Lactations. Yield to 8,136, 4.26, 3.29

GG Dam: Changue Melanie 3 EX, 70 Ton Cow

Yield to 10,063, 3-79-3.11 back in 1982

10 lactations

6 VG daughters and 1 EX

GGG Dam: Changue Milkmaid 18 VG

Yield to 7,267 @ 4 Fat, 3.26 – in 1978

Bred 1 EX Daughter

5 Lactations

GGGG Dam: Changue Milkmaid 15 GP

Bred 4 VG Daughters

Sire: Des Prairies Jim

Early Canadian Bull, big open ribbed cows.

Video Link: [Magician](#)

Marleycote Mercury (born 30th June 2019) and **Marleycote Majestic**
(born 30th June 2019)

Ear Tags: Mercury – 107248 702304, Majestic – 107248 602310

Full brother to Changue Medic ET. PLI £129, +132 Milk, +5 Fat, +6.3 Protein

Dam: Same as Magician

Sire: Med O Bloom Enhance Derick

PLI: £184, +440 Milk, +5.9 Fat, +10.8 Protein

Video Link: [Majestic](#)

Video for Mercury to follow

Marleycote Canaletto (born 2nd July 2019) **Marleycote Cipriani** (born 30th June 2019) – Full ET brothers

Ear Tag: Canaletto - 107248 102312, Cipriani – 107248 502309

Half-brother to Kye Time

Dam: Mary Rose 76 EX90 – 5 generations EX

G Dam: Mary Rose 42 ET EX92 (3)

9 Lactations.

Bred 2 VG and 1 EX daughters, plus Bell Changue Marie

GG Dam: Mary Rose 13 EX

5 Lactations

GGG Dam: Mary Rose 6 EX

7 Lactations.

Bred 1 EX and 1 VG daughter

Sire: Cadel

PLI: £123, -78 Milk, +1.2 Fat, +4.7 Protein

Type Merit at 1.7, plus 2.2 Feet and legs and 0.3 Mammary

We are milking several heifers and they all should do 7,000 plus as heifers despite his -78 milk!!

Video Link: [Canaletto](#)

Video Link: [Cipriani](#)

Marleycote Max (born 6th September 2019)

Ear Tags: 107248 702346

Dam: Changue Mary Rose 57 EX93 4E, 4 generations VG/EX

8 Lactations.

Bred 2 EX daughters:

- Changue Mary Rose 62 EX94. PLI: £16, +224 Milk, +7.6 Fat, +0.6 Protein. Dam of West Mossgiel Seafarer
- Mary Rose 80 EX92. PLI: £19. Bred an 87 point daughter

G Dam: Mary Rose 30 VG87

Bred 2 VG and 1 EX daughters

Sire: Bar Regent

PLI: £57, +96 Milk, 0 Fat, +3 Protein

Type Merit: 0.9, 1.8 Mammary and 0.3 legs and feet

Video Link: [Max](#)

Marleycote Performer (born 16th July 2019) and Marleycote Poltergeist (born 20th July 2019) – Full ET brothers

Ear tags: Performer – 107248 402322, Poltergeist – 107248 502323

Full brothers to Changue Pendulum – using him here on farm.

17 Daughters

Type Merit: 1.6, 1.7 Mammary and 1.6 legs and feet

Great Linear scores

Half-brothers to Changue Stadium – 96 daughters

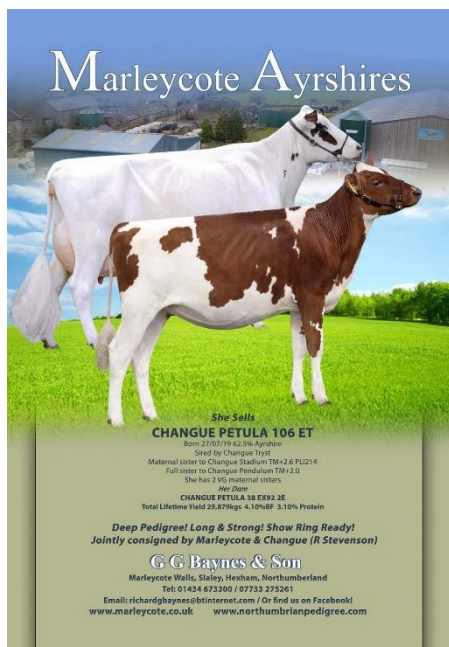
Type Merit: 2.1, 2 Mammary, 1.3 feet and legs

PLI: £97, +100 Milk, +4.7 fat, +0.1 Protein

We have used Stadium heavily on farm

We have 3 Performer sisters at Marley Cote Walls

Dam: Changue Petula 38 EX92 (2)



Dam & Full Sister to Performer & Poltergeist.

Yield to 6,912, 4.25-3.01

2 VG daughters and Dam to Changue Stadium @94 and Changue pendulum @ EX91

G Dam: Changue Petula 27 VG86

Daughters VG86 & EX92

GG Dam: Changue Petula 25

An 86-point daughter, an 88-point daughter, an 87-point daughter and a 90-point daughter

Video Link: [Performer](#)

Video Link: [Poltergeist](#)

Changue Crystal Maze, born 10th February 2019 – HB 036182416

Ear Tag: 107248 402231

Dam: Changue Maybelle 136 VG87

PLI: £89

5,889 in 142 days

Was giving 53 a day when she broke her leg but was a remarkably similar cow to her mother.

G Dam: Changue Maybelle 115 EX93



6th Lactation. 9,130 – 3.47-3.29 (more than double what she was giving before we bought her!)

One of the first Changue cows we bought, kept her son from this year to use on farm.

Sire: Bankend Quartz

A bull from many years back, he appears in the back pedigree of most, if not all, of the Changue herd so forms a great base!

Video Link: [Crystal Maze](#)

Note

The two bulls from my Sea Lily family combine production and type with showing success.

Although the Changue bred embryo bulls appear to lack the numbers on paper, I have no doubt the milk is in them as their female herd mates have proven themselves on my farm.

There is no question over the type scores and longevity behind these bulls, which is the reason I have every confidence in using them heavily in my own breeding program. I didn't set out to breed bulls to sell, they are for my own use.