

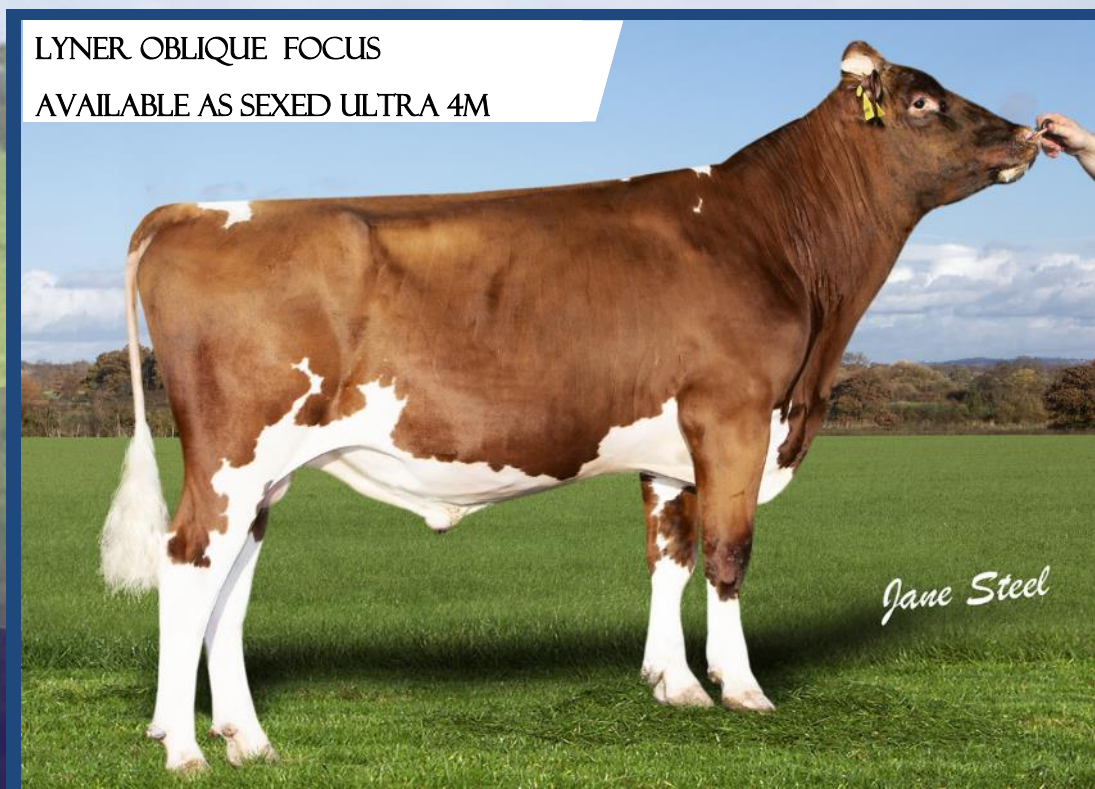
Cattle Services (AYR) LTD



SUMMER 2019

Sexed Ultra 4M

- SEXED ULTRA 4M IS A PRODUCT DESIGNED TO CONTAIN DOUBLE THE AMOUNT OF FEMALE SPERM CELLS PER STRAW THAN AN AVERAGE SEXED SEMEN STRAW
- AN INCREASE TO 4M FEMALE SPERM CELLS PER STRAW MEANS IT HAS MORE FEMALE SPERM CELLS THAN ANY OTHER SEXED PRODUCT ON THE MARKET
- CONCEPTION RATES THAT ARE COMPARABLE TO CONVENTIONAL STRAWS
- GENDER ACCURACY OF CONSISTENTLY ABOVE 90% FEMALES WHICH LEADS TO EASIER CALVINGS AND REDUCED COW STRESS



All figures supplied by AHDB Dairy. Cattle Services Ayr Ltd abide by the AHDB and Holstein UK established code of advertising. Photography by Jane Steel, Lucinda Morgan, Jessica Miller, Richard Hodgson, Bradley Cullen & Simon Tognola

Front Cover image : Troutbeck Skyfall Avril & Allstar Triclo Joybell

Willhome CHALLENGER

EXPORT
READY

HB NO -

03000007190994

DOB - 30/05/10

87.5% AYRSHIRE

LAGACE MODEM X EX94 AUTUMN GOLD X
VG88 DYNAMIC X FINALIST

DAM - WILLHOME GOLD CAROLINE EX94 3E
5 LACTATION AVERAGE 9,553KG, 3.7% FAT, 3 % PROTEIN

DTR: WILLHOME CHALLENGER AMANDA

OUTCROSS
SIRE WITH
SUPERB TYPE
AND
PRODUCTION



PTA: PROVEN SIRE: AYR. BASE 08/19: 37 dtrs/ 20 herds		PROD. REL. 82%		PLI REL 70%		TYPE REL: 65%			
MILK KG	237	FAT KG	4.7	FAT%	-0.08%	PROTEIN KG	-0.5	PROTEIN %	-0.13%
LIFESPAN	0.5	SOMATIC REL	68%	PLI	£79	FERTILITY INDEX	-3.3	CELLCOUNT	-11

Trait		-3	-2	-1	0	+1	+2	+3		Value
A Type Merit	Poor								Excellent	2
Mammary	Poor								Excellent	1.7
Legs & feet	Poor								Excellent	1.3
Stature	136cm								160cm	0.5
Chest Width	Narrow								Wide	-0.5
Body Depth	Shallow								Deep	-0.6
Angularity	Coarse								Open Rib	0.4
Rump Angle	High pins								Low pins	1.1
Rump width	Narrow								Wide	-0.3
Rear leg side	Straight								Sickled	-0.6
Foot angle	Low								Steep	0
Fore udd att	Loose								Tight	0.2
Rear udder ht	Very low								Very high	0.7
Udder sup	Broken								Strong	-0.1
Udder depth	Below hock								20cm above	1.6
Front teat pl	Outside								Close	-0.4
Teat length	Short								Long	0.3
Teat pos side	Close								Apart	0.7
Temperament	Poor								Good	0.9
Ease of milk	Slow								Fast	-0.7

EXPORT
READY

Gwynnog PRIMETIME

HB NO -

03000007191189

DOB - 29/04/13

87.5% AYRSHIRE

DE LA PLAINE PRIME X EX94 NAPIER
X EX95 EMERALD X EX93 RANGER RED

DAM - HARESFOOT NAPIER PUNCH EX94 5E
6 LACTATION AVERAGE 8,862KG, 4.2% FAT, 3.5% PROTEIN

DTR: GWYNNOG PRIMETIME SANDY ROSE

THE NUMBER
1 TYPE MERIT
SIRE
AVAILABLE
IN THE UK



PTA: PROVEN SIRE: AYR. BASE 08/19: 28 dtrs/ 15 herds

PROD. REL. 75%

PLI REL 65%

TYPE REL: 66%

MILK KG 56

FAT KG 11.9

FAT% 0.15%

PROTEIN KG 2.3

PROTEIN % 0.01%

LIFESPAN 0.4

SOMATIC REL 51%

PLI £241

FERTILITY INDEX 0.7

CELLCOUNT -1

Trait		-3	-2	-1	0	+1	+2	+3		Value
A Type Merit	Poor								Excellent	2.8
Mammary	Poor								Excellent	1.9
Legs & feet	Poor								Excellent	2.4
Stature	136cm								160cm	-0.8
Chest Width	Narrow								Wide	-1.4
Body Depth	Shallow								Deep	-0.6
Angularity	Coarse								Open Rib	0.3
Rump Angle	High pins								Low pins	-0.8
Rump width	Narrow								Wide	0.1
Rear leg side	Straight								Sickled	1.4
Foot angle	Low								Steep	-1.2
Fore udd att	Loose								Tight	3
Rear udder ht	Very low								Very high	1.5
Udder sup	Broken								Strong	1.8
Udder depth	Below hock								20cm above	2.4
Front teat pl	Outside								Close	0.3
Teat length	Short								Long	0.2
Teat pos side	Close								Apart	0.2
Temperament	Poor								Good	-0.8
Ease of milk	Slow								Fast	-0.6

HB NO -
 03000006182031
 DOB - 15/10/13
 93.75% AYRSHIRE

Swaites NICKLE

EXPORT
 READY

A2/A2

HARESFOOT PANACHE X EX93 BLACKTHORN
 X GP84 ICEMAN X H281 LORD ONTARIO

DAM - SWAITES NONNY 5 EX93 2E

7 LACTATION AVERAGE 9,365KG, 4.1% FAT, 3.4% PROTEIN

DTR: JAMARA NICKLE LADY



HIS
 DAUGHTERS
 HAVE
 FANTASTIC
 OPEN DAIRY
 FRAMES
 ALONG WITH
 SUPERB
 UDDERS

PTA: PROVEN SIRE: AYR. BASE 08/19: 33 dtrs/ 15 herds

PROD. REL. 77%

PLI REL 66%

TYPE REL: 64%

MILK KG 170 FAT KG 18.2 FAT% 0.17% PROTEIN KG 7.2 PROTEIN % 0.02%
 LIFESPAN 0.2 SOMATIC REL 54% PLI £292 FERTILITY INDEX 4 CELLCOUNT -12

Trait		-3	-2	-1	0	+1	+2	+3		Value
A Type Merit	Poor								Excellent	0.6
Mammary	Poor								Excellent	0.3
Legs & feet	Poor								Excellent	0.8
Stature	136cm								160cm	0.3
Chest Width	Narrow								Wide	2.1
Body Depth	Shallow								Deep	1.6
Angularity	Coarse								Open Rib	-1
Rump Angle	High pins								Low pins	-0.8
Rump width	Narrow								Wide	0
Rear leg side	Straight								Sickled	-1
Foot angle	Low								Steep	0.5
Fore udd att	Loose								Tight	0.4
Rear udder ht	Very low								Very high	0.4
Udder sup	Broken								Strong	-1.1
Udder depth	Below hock								20cm above	0.1
Front teat pl	Outside								Close	0.4
Teat length	Short								Long	-0.1
Teat pos side	Close								Apart	-0.2
Temperment	Poor								Good	1.3
Ease of milk	Slow								Fast	-2.6

EXPORT
READY

Rosehill REAL MCCOY

TRI-STAR REALTY X EX93 BLACKTHORN
X EX94 SIR ADAM X EX LORD ONTARIO

HB NO -
03000006181762
DOB - 13/02/11
100% AYRSHIRE

DAM - ROSEHILL BLACK MAGENTA EX93 3E
6 LACTATION AVERAGE 8,641KG, 4.2% FAT, 3.2% PROTEIN

DTR: BRUCHAG MCCOY MARJORIE

THE NUMBER
1
PRODUCTION
SIRE
AVAILABLE
FROM CATTLE
SERVICES



PTA: PROVEN SIRE: AYR. BASE 08/19: 161 dtrs/ 56 herds PROD. REL. 92% PLI REL 88% TYPE REL: 88%

MILK KG 718 FAT KG 22.9 FAT% -0.09% PROTEIN KG 18.5 PROTEIN % -0.08%

LIFESPAN -0.2 SOMATIC REL 89% PLI £140 FERTILITY INDEX -6.5 CELLCOUNT 2

Trait		-3	-2	-1	0	+1	+2	+3		Value
A Type Merit	Poor				■				Excellent	-0.4
Mammary	Poor				■				Excellent	0.3
Legs & feet	Poor			■					Excellent	-0.8
Stature	136cm				■	■			160cm	1
Chest Width	Narrow				■				Wide	0.2
Body Depth	Shallow				■				Deep	0.3
Angularity	Coarse				■	■			Open Rib	0.7
Rump Angle	High pins				■	■			Low pins	0.7
Rump width	Narrow				■	■	■		Wide	1.8
Rear leg side	Straight				■	■			Sickled	1.2
Foot angle	Low				■				Steep	0
Fore udd att	Loose			■					Tight	-1.3
Rear udder ht	Very low				■				Very high	0.2
Udder sup	Broken				■	■	■		Strong	2.5
Udder depth	Below hock			■					20cm above	-0.7
Front teat pl	Outside				■	■			Close	0.7
Teat length	Short				■	■			Long	0.8
Teat pos side	Close				■	■			Apart	1.1
Temperament	Poor	■	■	■	■	■			Good	-3.6
Ease of milk	Slow				■				Fast	-0.6

Sandyford TRICLO

EXPORT
READY

HB NO -

03000007191257

DOB - 19/02/16

75% AYRSHIRE

PALMYRA TRI-STAR REALITY X
EX97 CHATTER X VG EAGAN

DAM - SANDYFORD CLOVER EX97 8E
10 LACTATION AVERAGE 11,378KG, 4.3% FAT, 3.4% PROTEIN

DTR: ALLSTAR TRICLO JOYBELL



HUGE
PRODUCTION
AND GREAT
REAR
UDDERS
FROM THE
CLOVER
FAMILY

PTA: PROVEN SIRE: AYR. BASE 08/19: 67dtrs/ 30 herds PROD. REL. 85% PLI REL. 72% TYPE REL: 64%

MILK KG 460 FAT KG 15.6 FAT%-0.05% PROTEIN KG 12.4 PROTEIN % -0.04%
LIFESPAN 0.1 SOMATIC REL 53% PLI £148 FERTILITY INDEX -5.6 CELLCOUNT -1

Trait		-3	-2	-1	0	+1	+2	+3		Value
A Type Merit	Poor				0.4				Excellent	0.4
Mammary	Poor				1				Excellent	1
Legs & feet	Poor				-0.1				Excellent	-0.1
Stature	136cm				0.3				160cm	0.3
Chest Width	Narrow				-0.6				Wide	-0.6
Body Depth	Shallow				0.6				Deep	0.6
Angularity	Coarse				0.9				Open Rib	0.9
Rump Angle	High pins				0.9				Low pins	0.9
Rump width	Narrow				0.5				Wide	0.5
Rear leg side	Straight				1.1				Sickled	1.1
Foot angle	Low				-2				Steep	-2
Fore udd att	Loose				0.6				Tight	0.6
Rear udder ht	Very low				1.6				Very high	1.6
Udder sup	Broken				0.4				Strong	0.4
Udder depth	Below hock				0.9				20cm above	0.9
Front teat pl	Outside				1.8				Close	1.8
Teat length	Short				-2.2				Long	-2.2
Teat pos side	Close				2.1				Apart	2.1
Temperament	Poor				-0.5				Good	-0.5
Ease of milk	Slow				0.5				Fast	0.5

EXPORT
READY

Troutbeck SKYFALL

PROVEN
SIRE

PALMYRA TRI STAR BURDETTE X EX93
AMADEUS X REDSTAR RED X ACCOLADE

HB NO -
03000007191175
DOB - 13/11/2012
87.5 % AYRSHIRE

DAM -WEST MOSSGIEL MISS MODERN 5 EX93 2E

7 LACTATION AVERAGE 7183KG 4.7% FAT, 3.6% PROTEIN

DTR: TROUTBECK SKYFALL AVRIL



ONE OF THE
MOST
BALANCED
PROOFS
AVAILABLE
TODAY

PTA: PROVEN SIRE: AYR. BASE 08/19: 75 dtrs/ 12 herds

PROD. REL. 86%

PLI REL. 75%

TYPE REL: 71%

MILK KG 251 FAT KG 27.1 FAT%0.25% PROTEIN KG 10.7 PROTEIN % 0.04%
LIFESPAN 0.2 SOMATIC REL 69% PLI £354 FERTILITY INDEX 6.8 CELLCOUNT -6

Trait		-3	-2	-1	0	+1	+2	+3	Value
A Type Merit	Poor								Excellent 0.7
Mammary	Poor								Excellent 0.9
Legs & feet	Poor								Excellent 0.6
Stature	136cm								160cm 1.1
Chest Width	Narrow								Wide 1.1
Body Depth	Shallow								Deep 1.4
Angularity	Coarse								Open Rib 0.6
Rump Angle	High pins								Low pins 0.8
Rump width	Narrow								Wide -0.3
Rear leg side	Straight								Sickled -0.3
Foot angle	Low								Steep 0.4
Fore udd att	Loose								Tight 2.6
Rear udder ht	Very low								Very high 1
Udder sup	Broken								Strong 0
Udder depth	Below hock								20cm above 1.8
Front teat pl	Outside								Close -0.2
Teat length	Short								Long 0.1
Teat pos side	Close								Apart 0
Temperament	Poor								Good 0.7

PROVEN
SIRE
SEXED

Rosehill VITALITY

EXPORT
READY
A2/A2

HB NO:-

03000006181894

DOB - 02/01/12

100% AYRSHIRE

TRI-STAR REALITY X EX96 BLACKTHORN
X GP84 NUCLEUS X VG88 COMMANDER

DAM – ROSEHILL BLACK VELOUR EX96 6E

10 LACTATION AVERAGE 8,776KG, 3.9% FAT, 3.3% PROTEIN

DTR: SANDYFORD VITALITY CLOVER



ONE OF THE
HIGHEST
COMBINED
TYPE AND
PRODUCTION
SIRE
AVAILABLE IN
TODAY'S
MARKET

PTA: PROVEN SIRE: AYR. BASE 08/19:	100 dtrs/ 45 herds	PROD. REL. 91%	PLI REL. 84%	TYPE REL: 85%
MILK KG 489	FAT KG 33.4	FAT%0.19%	PROTEIN KG 15.4	PROTEIN % -0.01%
LIFESPAN 0.1	SOMATIC REL 83%	PLI £268	FERTILITY INDEX 0.2	CELLCOUNT 16

Trait		-3	-2	-1	0	+1	+2	+3		Value
A Type Merit	Poor				■				Excellent	0.2
Mammary	Poor				■				Excellent	0.3
Legs & feet	Poor								Excellent	0
Stature	136cm				■				160cm	0.9
Chest Width	Narrow								Wide	0
Body Depth	Shallow				■				Deep	-0.3
Angularity	Coarse				■				Open Rib	0.3
Rump Angle	High pins				■				Low pins	0.4
Rump width	Narrow				■				Wide	0.5
Rear leg side	Straight						■		Sickled	1.5
Foot angle	Low			■					Steep	-1.4
Fore udd att	Loose				■				Tight	0.2
Rear udder ht	Very low						■		Very high	1.2
Udder sup	Broken				■				Strong	-0.1
Udder depth	Below hock				■				20cm above	0.4
Front teat pl	Outside				■				Close	0.1
Teat length	Short			■					Long	-1.3
Teat pos side	Close							■	Apart	2.8
Temperament	Poor	■							Good	-3.2
Ease of milk	Slow				■				Fast	-0.4

EXPORT
READY

Rosehill MANDERVILLE



SEXED ULTRA 4M

ARDMORE CROWN NAPIER X EX93 BLACKTHORN
X EX94 SIR ADAM X EX ONTARIO X EX J.R

HB NO -

03000006181948

DOB - 27/07/12

100% AYRSHIRE

DAM - ROSEHILL BLACK MAGENTA EX93 3E
6 LACTATION AVERAGE 8,641KG, 4.2% FAT, 3.2% PROTEIN

DTR: CARNELL SNOWDROP 380



THE
NUMBER 1
COMBINED
TYPE AND PLI
SIRE IN THE
UK

PTA: PROVEN SIRE: AYR. BASE 08/19: 130 dtrs/ 55 herds PROD. REL. 90% PLI REL 84% TYPE REL: 85%

MILK KG 376 FAT KG 30.7 FAT% 0.22% PROTEIN KG 15.3 PROTEIN % 0.04%
LIFESPAN 0.2 SOMATIC REL 81% PLI £497 FERTILITY INDEX -1.5 CELLCOUNT -13

Trait		-3	-2	-1	0	+1	+2	+3		Value
A Type Merit	Poor								Excellent	1
Mammary	Poor								Excellent	0.9
Legs & feet	Poor								Excellent	0.5
Stature	136cm								160cm	-2.1
Chest Width	Narrow								Wide	-1.3
Body Depth	Shallow								Deep	-0.6
Angularity	Coarse								Open Rib	-0.5
Rump Angle	High pins								Low pins	1.2
Rump width	Narrow								Wide	-0.4
Rear leg side	Straight								Sickled	1.4
Foot angle	Low								Steep	-1.3
Fore udd att	Loose								Tight	-0.3
Rear udder ht	Very low								Very high	0.6
Udder sup	Broken								Strong	41
Udder depth	Below hock								20cm above	0.7
Front teat pl	Outside								Close	2.2
Teat length	Short								Long	-1.7
Teat pos side	Close								Apart	-0.7
Temperament	Poor								Good	-0.8
Ease of milk	Slow								Fast	-0.2



SEXED ULTRA 4M

Hilltown OBLIQUE

EXPORT
READY

HB NO -

03000006181738

DOB - 20/2/10

100% AYRSHIRE

JELYCA OBLIQUE X EX94 TRIPLE CROWN
X PEARL REEF X EX JUROR

DAM - HILLTOWN SNOWBALL 466 EX94 5E

11 LACTATION AVERAGE 6,691KG, 4.1% FAT, 3.4% PROTEIN

DTR: BUTTER.BESLEY OBLIQUES MAY



OBLIQUE
CONTINUES
TO BE A
BREED
LEADING
TYPE AND PLI
SIRE

PTA: PROVEN SIRE: AYR. BASE 08/19 195 dtrs / 59 herds

PROD. REL. 93%

PLI REL. 91%

TYPE REL: 92%

MILK KG 240	FAT KG 15	FAT% 0.08%	PROTEIN KG 7	PROTEIN % -0.02%
LIFESPAN 0.5	SOMATIC REL 93%	PLI £272	FERTILITY INDEX 1.1	CELLCOUNT 0

Trait		-3	-2	-1	0	+1	+2	+3		Value
A Type Merit	Poor								Excellent	2.2
Mammary	Poor								Excellent	1.4
Legs & feet	Poor								Excellent	1.7
Stature	136cm								160cm	-0.8
Chest Width	Narrow								Wide	0.4
Body Depth	Shallow								Deep	-1
Angularity	Coarse								Open Rib	-0.4
Rump Angle	High pins								Low pins	0.5
Rump width	Narrow								Wide	1.4
Rear leg side	Straight								Sickled	-0.4
Foot angle	Low								Steep	0.6
Fore udd att	Loose								Tight	1.2
Rear udder ht	Very low								Very high	0.1
Udder sup	Broken								Strong	1.9
Udder depth	Below hock								20cm above	0.9
Front teat pl	Outside								Close	1.5
Teat length	Short								Long	-1.9
Teat pos side	Close								Apart	1.2
Temperament	Poor								Good	-0.4
Ease of milk	Slow								Fast	0

EXPORT
READY

Brieryside MAGIC



SEXED ULTRA 4M

KAMOURASKA ROCKSTAR X EX REALITY
X EX93 BLACKTHORN X EX94 SIR ADAM X EX
LORD ONTARIO X EX J. R.

HB NO -

0300000182237

DOB - 24/04/16

100% AYRSHIRE

DAM - ROSEHILL REAL BLACK MAGENTA EX90 2E
4 LACTATION AVERAGE 8,966KG, 3.8% F, 3.2% P

GDAM: ROSEHILL BLACK MAGENTA EX93



FUTURE SIRE

ETA Young Sire: Ayr.Base : 08/19	
Type Merit	0.85
PLI	£362
PLI Rel%	37%
Milk KG	527
Prod.Rel %	37%
Fat KG	23
Fat %	0.03%
Protein KG	20.7
Protein %	0.04%

HUGE PRODUCTION AND COMPONENTS FROM
THE MARVELLOUS MAGENTA FAMILY

Whitecroft NECTAR

EXPORT
READY

HB NO -

03000006182264

DOB - 13/1/16

93.75% AYRSHIRE

GWYNNOG PRIMETIME X EX93 J OBLIQUE
X EX94 FIRST LORD X EX94 TRIPLE PRIME
X EX MURPHY X EX93 TRIDENT

DAM - WHITECROFT NELLIE 49 EX93 3E
4 LACTATION AVERAGE 8,154 KG, 4.7% FAT, 3.6% PROTEIN

GDAM: WHITECROFT NELLIE 38 EX94



FUTURE SIRE

ETA Young Sire: Ayr.Base : 08/19	
Type Merit	1.9
PLI	£366
PLI Rel%	36%
Milk KG	325
Prod.Rel %	36%
Fat KG	19
Fat %	0.1%
Protein KG	10.1
Protein %	-0.01%

THE ALL IN ONE PACKAGE SIRE:
PRODUCTION, TYPE & PLI

EXPORT
READY

Whitecroft PANELL

HARESFOOT PANACHE X EX93 J OBLIQUE
X EX94 FIRST LORD X EX94 TRIPLE PRIME X EX
MURPHY X EX93 TRIDENT

HB NO -
03000006182328
DOB - 19/10/17
93.75% AYRSHIRE

DAM - WHITECROFT NELLIE 49 EX93 (2E)
4 LACTATION AVERAGE 8,154KG, 4.7% FAT, 3.6% PROTEIN

DAM: WHITECROFT NELLIE 49 EX93 (2E)



FUTURE SIRE

ETA Young Sire: Ayr.Base : 08/19

Type Merit	0.35
PLI	£389
PLI Rel%	36%
Milk KG	360
Prod.Rel %	42%
Fat KG	24.5
Fat %	0.16%
Protein KG	11.6
Protein %	0%

NEWLY RELEASED SIRE WHOSE 5 NEAREST
DAMS AVERAGE OVER 92 POINTS



Sandyford TIME LORD

EXPORT
READY

HB NO -

03000007191491

DOB - 03/11/17

90.625% AYRSHIRE

CELANDINE FIRST LORD X VG86 REMINGTON
X EX94 TWILIGHT X EX97 CHATTER.

DAM - SANDYFORD MAPLE CLOVER VG86

3 LACTATION AVERAGE 10.181 KG, 3.98% FAT, 3.1% PROTEIN

MAT SISTER: SANDYFORD MARLOW CLOVER



FUTURE SIRE

ETA Young Sire: Ayr.Base : 08/19

Type Merit	0.98
PLI	£200
PLI Rel%	35%
Milk KG	311
Prod.Rel %	42%
Fat KG	6.6
Fat %	-0.09%
Protein KG	9.1
Protein %	-0.02%

ANOTHER FANTASTIC SIRE FROM THE AMAZING
CLOVER FAMILY

EXPORT
READY

Swaites DERMOTT


SEXED ULTRA 4M

WEST MOSSGIEL MODERN REALITY X EX91 POTTER
X VG88 MAGNUS X EX94 CELEBRATION

HB NO -

03000007191471

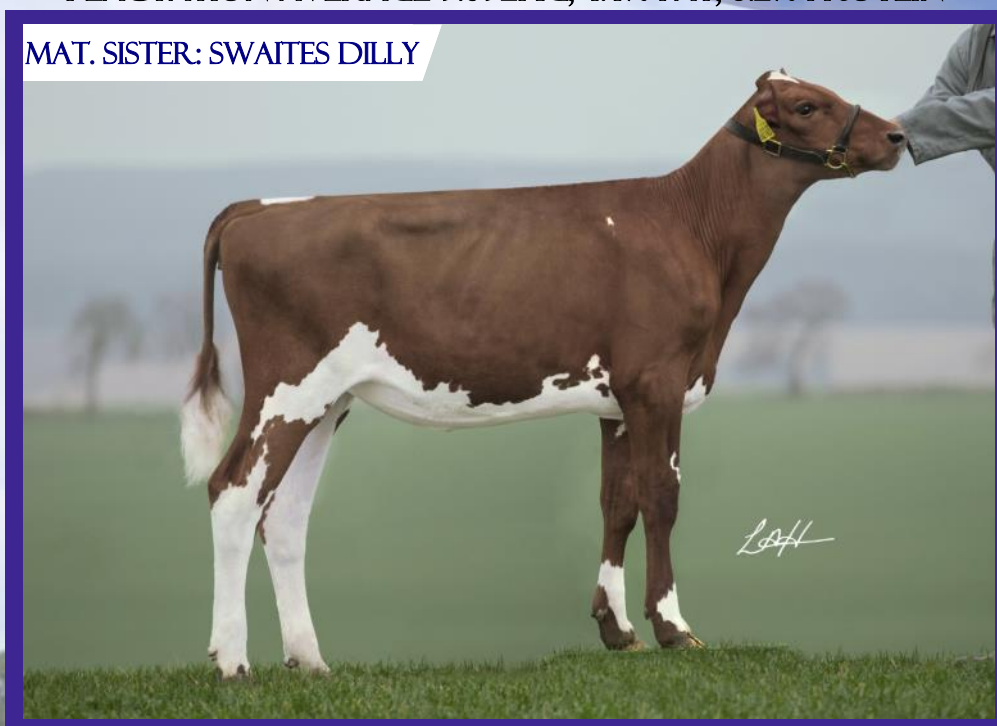
DOB - 24/09/17

89.0625% AYRSHIRE

DAM - SWAITES DILLY 4 EX91

4 LACTATION AVERAGE 9.092KG, 4.4% FAT, 3.2% PROTEIN

MAT. SISTER: SWAITES DILLY



FUTURE SIRE

ETA Young Sire: Ayr.Base : 08/19	
Type Merit	0.78
PLI	£213
PLI Rel%	33%
Milk KG	301
Prod.Rel %	40%
Fat KG	13.4
Fat %	0.02%
Protein KG	6
Protein %	-0.07%

SEXED ULTRA 4M SEMEN NOW AVAILABLE



SEXED ULTRA 4M

Lynner Oblique FOCUS

EXPORT
READY

HB NO -

03000006182316

DOB - 08/06/17

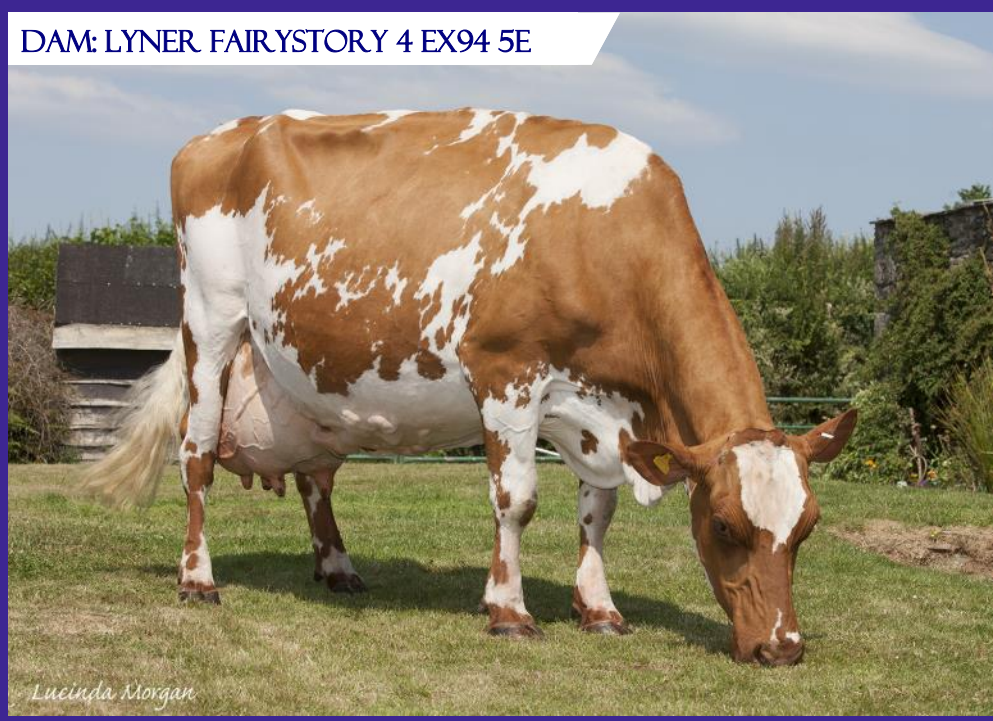
100% AYRSHIRE

JELYCA OBLIQUE X EX94 BILLY RUFFIAN
X VG89 AUTUMN GOLD X EX91 BLUE RIBAND

DAM - LYNER FAIRYSTORY 4 EX94 5E

7 LACTATION AVERAGE 6,850KG, 4.3% FAT, 3.5% PROTEIN

DAM: LYNER FAIRYSTORY 4 EX94 5E



FUTURE SIRE

ETA Young Sire: Ayr.Base : 08/19	
Type Merit	1.09
PLI	£218
PLI Rel%	36%
Milk KG	169
Prod.Rel %	43%
Fat KG	10
Fat %	0.06%
Protein KG	6.8
Protein %	0.03%

TYPE, COMPONENTS AND
PRODUCTION FROM THE FAIRYSTORY FAMILY

Heydale WHITE WILLOW



SEXED ULTRA 4M

HILLTOWN OBLIQUE X EX94 ICEMAN
X EX92 TUXEDO X EX92 PHOTO FINISH

HB NO -

03000006182337

DOB - 27/09/17

100% AYRSHIRE

DAM - HEYDALE WINSOME 109 EX94 (9E)
10 LACTATION AVERAGE 7,836KG, 4.4% FAT, 3.4% PROTEIN

DAM: HEYDALE WINSOME 109 EX94 9E



FUTURE SIRE

ETA Young Sire: Ayr.Base : 08/19	
Type Merit	0.8
PLI	£221
PLI Rel%	36%
Milk KG	170
Prod.Rel %	42%
Fat KG	10.6
Fat %	0.06%
Protein KG	7
Protein %	0.02%

NEWLY RELEASED SIRE FROM THE
WONDERFUL WINSOME FAMILY

AVAILABLE

Sires

ARDMORE CROWN NAPIER

BEELINE SANTA ROCK

BELLFIELD TOP QUALITY

BIGGINVALE DESTINATION

BRIERYSIDE GOLDEN SAND

BRIERYSIDE SNOWMAN

BROCKLEHILL KESTRAL

CARNELL TRISTAN

CASTERN TORNADO

CHANGUE BACK-UP

CHANGUE TRYST

CALDERVALE REALISATION

AYRSHIRE HI FERTILITY

CUTHILL TOWERS BUSTER

CUTHILL TOWERS MADISON

CUTHILL TOWERS RAMBO

CUTHILL TOWERS ROMEO

EAST CHURCH PATROLMAN

FLINTSTONE BRAZEN ENZO

GLENGARRY SELWOD FUTURE

GREEN LANE PRODIGY

GRANDAGE BRIGHT SPARK

GREEN LANE DEFENDER

GREEN LANE WORLD CROWN

GREEN LANE PRODIGY

HALMYRE URR. LIEUTENANT

HARESFOOT PANACHE

HARESFOOT SIMPLY PERFEK

HILLTOWN HIJACK

HUNNINGTON ADMIRAL

HUNNINGTON BBK EASLAD

HUNNINGTON FAMOUS

HUNNINGTON MANDELLA

KNUTSFORD WHITE FLASH

MAGY'S LUSTRUM

RAVENHILL VICTORY

RAVENHILL ENIGMA

ROSEHILL RHYTHAMAGIG

ROSEHILL SLIGHTLY MAGIC

SHADY WALNUT MARK ANTHONY

STAMFORD FIRST QUALITY

STAMFORD HIGH DEFINITION

STAMFORD HENRIK

STAMFORD AMBASSADOR

STAMFORD TRIGGER

STAMFORD TRIPLE THREAT

STEWARTY ROYAL SECRET

STEVENSON'S SALTIRE

STRETTON TRIPLE PRIME

WHITECROFT MR. MO

WILLHOME ROCKSTAR

WEST MOSSGIEL MODERN REALITY

UK bulls, bred from the best
cows in the Breed that are proven
on UK farms



Sam Wake

07803 515626 Office: 01292 471292

sales@cattleservices.org

www.cattleservices.org