



EAST CHURCH
SALE
26TH APRIL 2018

Open day sale of selected families

As part of the 2018 Breed Open Day, Mark Evans has handpicked a few members of some of his best families in the East Church herd for sale so that you can purchase and take home an Ayrshire.

Included are members of the milking herd and some young stock from this Organic award-winning herd. The quality on offer speaks for itself which will be evident once you have inspected the animals on offer.

The sale will be conducted by Mark Davis from Kivells auctioneers and will be run with the normal terms and conditions of auction.

1. East Church Napier Toffee Maker VG85

UK/363361 501939

0301510332	PLI +£50	Born: 20.02.13	Calved: 19.02.18		
1st	5142	3.95	3.41	305	scc39
2nd	6436	3.50	3.26	305	scc33
Currently giving:	28.8kgs	3.08	3.03		scc229

Sire: Ardmore Crown Napier EX95 **By:** Meikle Laught Triple Crown VG

Dam: East Church Thorny Toffee Maker 2 EX90(2) **By:** Rosehill Blackthorn EX

1st	4073	4.17	3.31	305
2nd	4987	4.05	3.28	305
3rd	5589	4.32	3.46	305
4th	6823	3.96	3.43	305
5th	6009	4.01	3.53	305

G.Dam: East Church Toffee Maker 2 VG87 LP60 **By:** Meggitt Amigo

2nd	5224	4.84	3.51	280
3rd	5807	4.29	3.54	305
4th	5768	4.93	3.64	305
5th	5100	4.67	3.66	305
6th	5941	4.73	3.80	305
7th	5926	4.57	3.67	294
8th	5656	3.83	3.56	305
9th	6301	4.70	3.58	305
10th	7097	4.05	3.33	305
11th	5176	4.73	3.39	305

3.Dam: East Church Toffee Maker H3 **By:** Brocklehill Harvest Gold EX

1st	5407	4.45	3.43	259
2nd	6592	4.50	3.40	305
3rd	9160	4.23	3.28	305
4th	6847	4.06	3.52	283
5th	6883	3.97	3.27	213
7th	6840	4.12	3.22	281
8th	6419	3.62	3.36	305

4.Dam: East Church Buster 2 H2 **By:** Caldeglan Samson

5.Dam: East Church Blanco's Buster H3 **By:** Pant Wizard

6.Dam: East Church Blanco GP **By:** Twemlow Pantella VG

2. East Church Very Special Rosemary VG86

UK/363361 601982

0301509367 **PLI -£74** **Born: 14.05.13** **Calved: 20.01.17**
Due: 21.09.18 **PD+** **To: Hunnington Famous**

1st	4331	3.82	3.50	305	scc152
2nd	4090	3.57	3.44	274	scc 141
Currently giving:	20.8kgs	3.75	3.32		scc49

Sire: East Church Stans Rosinni EX90 **By:** Milkmaids Stanley EX90

Dam: East Church Dons Special Rosemary VG85 **By:** East Church Admiral Don VG87

1st	4671	4.08	3.24	305
2nd	5924	3.88	3.22	305
3rd	5281	3.89	3.58	305
4th	6421	3.49	3.30	305
5th	6535	3.59	3.42	286
6th	7434	3.78	3.24	305
7th	6559	3.80	3.29	305
8th	4307	4.49	3.37	299

G.Dam: East Church Rosemarys Totality VG89 **By:** Meikle Laught Triple Crown VG

2nd	4506	3.98	3.25	305
3rd	4662	3.80	3.35	272
4th	5007	4.34	3.32	305
5th	5705	4.33	3.29	305
6th	4843	3.64	3.30	268
7th	5902	4.20	3.20	305

3.Dam: Dilham Manor Special Rosemary 17 H185 **By:** Pant Titanic

1st	4848	4.30	3.46	305
2nd	6110	4.44	3.24	305
3rd	4734	4.01	3.34	269
4th	6717	4.06	3.30	283
5th	6965	3.95	3.17	305
6th	7100	4.00	2.95	305

4.Dam: Dilham Manor Special Rosemary 16 H2 **By:** Wheatrig Lenas Commander EX

5.Dam: Dilham Manor Double Rosemary VG **By:** Dilham Double Agent

6.Dam: Dilham Manor Gold Rosemary 9 GP **By:** Dilham Gold Cup

7.Dam: Dilham Manor Quaker Rosemary 2 VG **By:** Dilham Quaker Man

8.Dam: Dilham Manor Rosemary 15 GP

3. East Church Prime Time Toffee Maker

UK/363361 102390

0301515291 PLI +£132

Born: 30.06.15

Calved: Will Be Freshly Calved by Sale Day

Sire: De La Plaine Prime By: Palmyra Tri-Star Reality EX90

Dam: East Church Longrun Toffee Maker VG86 By: Kellcrest Longrun ET

1st	5390	3.89	3.16	305
2nd	5607	4.27	3.43	305
3rd	6342	4.38	3.47	305

G.Dam: East Church Calimeros Toffee Maker EX93(4) By: Margot Calimero VG85

1st	5036	4.61	3.63	281
2nd	5175	4.66	3.64	305
3rd	6631	4.02	3.50	305
5th	6599	4.25	3.38	282
6th	7604	4.12	3.44	285
7th	7519	4.13	3.45	305
8th	7554	3.91	3.43	305

3.Dam: East Church Toffee Maker 2 VG87 LP60 By: Meggitt Amigo

2nd	5224	4.84	3.51	280
3rd	5807	4.29	3.54	305
4th	5768	4.93	3.64	305
5th	5100	4.67	3.66	305
6th	5941	4.73	3.80	305
7th	5926	4.57	3.67	294
8th	5656	3.83	3.56	305
9th	6301	4.70	3.58	305
10th	7097	4.05	3.33	305
11th	5176	4.73	3.39	305

4.Dam: East Church Toffee Maker H3 By: Brocklehill Harvest Gold EX

5.Dam: East Church Buster 2 H2 By: Calderglen Samson

6.Dam: East Church Blanco's Buster H3 By: Pant Wizard

7.Dam: East Church Blanco GP By: Twemlow Pantella VG

4. East Church Easy Tinsel

UK/363361 402372

0301514957 PLI +£77

Born: 09.05.15

Calved: Will Be Freshly Calved by Sale Day

Sire: Hunnington BBK Easlad EX93 By: Blackaddar B B Kellogg EX90(2)

Dam: East Church Potters Tinsel EX90 By: Des Prairies Potter

1st	6592	4.17	3.39	305
2nd	6540	4.18	3.34	305
3rd	7503	4.19	3.31	305
4th	7305	4.96	3.21	305
5th	7067	4.18	3.30	257

G.Dam: Romany Narcissus 2 H282 By: Dilham Bertha's Commander ET EX

2nd	4737	4.67	3.42	287
3rd	5353	4.02	3.19	305

3.Dam: Mercaston Narcissus 147 H280 By: Mercaston Imperial

1st	4431	3.63	3.35	290
2nd	6462	3.60	3.23	304

4.Dam: Mercaston Narcissus 92 H2 By: Mercaston Star Attraction

5.Dam: Mercaston Narcissus 24 GP By: Bargower Highland Pride VG

6.Dam: Mercaston Narcissus 5 VG By: Bargower Star Gem

5. East Church Rocking Doll

UK/363361 502464

0301517866 PLI +£175 **Born: 11.03.16** **Due: 26.05.18**
PD+ **To: East Church Rosco**

Sire: Kamouraska Rockstar EX90 **By:** Lagace Modem ET EX96

Dam: East Church Real Fine Doll EX92 **By:** Palmyra Tri-Star Reality EX90

1st	6967	3.97	2.91	305
2nd	6328	4.04	3.20	305
3rd	7770	3.56	3.00	305

G.Dam: East Church Milkmaids Dorothy EX91 **By:** East Church Ambition

1st	4698	4.19	3.24	305
2nd	5240	3.95	3.30	253
3rd	7451	3.82	3.22	297
4th	7556	3.97	3.30	305
5th	8197	3.96	3.29	305
6th	7084	4.15	3.25	305
7th	6371	4.13	3.19	305

3.Dam: East Church Tuxedos Dorothy H377 **By:** Bonnie Brae Tuxedo

1st	4556	4.50	3.11	301
-----	------	------	------	-----

4.Dam: East Church Dorothy **By:** Brocklehill Harvest Gold EX

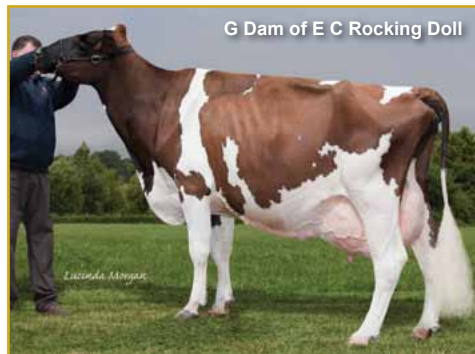
5.Dam: East Church Daisy H4 **By:** Moorside All Star

6.Dam: Meikle's Doris H3 **By:** Dilham President VG

7.Dam: Meikle's Quaker Rye 2 VG **By:** Ellerton Regal Dawn

8.Dam: Meikle's Quaker Rye G **By:** Balig Supreme Again EX

9.Dam: Meikle's Quaker Oat **By:** Monty's Concord



6. East Church Pendennis Patsy

UK/363361 601465

0301517867 PLI +£136 **Born: 12.03.16** **Due: 06.07.18**
PD+ **To: East Church Roy Boy**

Sire: Rosehill Pendennis ET **By:** Mapleburn Remington

Dam: East Church Dreamers Patsy VG87 **By:** Nexus Dreamer

1st	6255	3.73	3.19	305
2nd	5169	3.82	3.35	275

G.Dam: East Church Pardners Patsy EX92(3) LP60

By: Woodland View Pardner EX96

1st	5669	4.02	3.08	305
2nd	6334	4.21	3.27	305
3rd	6475	4.28	3.31	305
4th	6949	3.81	3.18	305
5th	8860	3.95	3.12	305
6th	8898	3.88	3.04	305
7th	7349	4.40	3.10	305
8th	7180	3.98	3.14	305

3.Dam: East Church Patsy EX90 LP60 **By:** Meggitt Amigo

2nd	5385	4.51	3.52	281
3rd	6107	4.59	3.51	305
4th	6504	4.07	3.36	302
5th	5964	4.19	3.42	278
6th	4944	4.45	3.39	277
7th	4736	4.05	3.44	305
8th	4967	4.52	3.52	288
9th	5331	4.26	3.54	305
10th	7578	4.13	3.40	305
11th	5909	4.04	3.44	305

4.Dam: East Church Patty H280 **By:** Ballyclan First Command

5.Dam: East Church Patience H3 **By:** Pant Wizard

7. East Church Pendennis Julia

UK/363361 502618

0301521785 **PLI +£145** **Born: 02.08.17**

Sire: Rosehill Pendennis ET **By:** Mapleburn Remington

Dam: East Church Patrolmans Julia GP81 **By:** East Church Patrolman EX90

1st	4091	3.77	3.45	253
-----	------	------	------	-----

G.Dam: East Church Commodore Julia **By:** Castern Commodore

1st	4770	3.86	3.27	262
-----	------	------	------	-----

2nd	6560	3.98	3.36	305
-----	------	------	------	-----

3rd	6229	4.09	3.14	305
-----	------	------	------	-----

4th	6171	4.09	3.27	305
-----	------	------	------	-----

5th	6059	3.62	3.19	272
-----	------	------	------	-----

6th	6323	3.75	3.23	305
-----	------	------	------	-----

3.Dam: East Church Ambitious Julia VG85 LP60 **By:** East Church Ambition

2nd	4487	4.56	3.53	305
-----	------	------	------	-----

3rd	5177	4.29	3.34	301
-----	------	------	------	-----

4th	7459	4.60	3.37	305
-----	------	------	------	-----

5th	6939	3.98	3.15	305
-----	------	------	------	-----

6th	6764	4.73	3.26	305
-----	------	------	------	-----

7th	5876	4.69	3.19	305
-----	------	------	------	-----

8th	6501	4.78	3.28	305
-----	------	------	------	-----

9th	7173	4.45	3.18	305
-----	------	------	------	-----

10th	5695	4.09	3.24	305
------	------	------	------	-----

4.Dam: East Church Pardners Julie VG89

By: Woodland View Pardner EX96

5.Dam: Hilltown Julep 11 H3

By: Killoch Teenoso

6.Dam: Hilltown Julep 8

By: Townhead Double Dash VG

7.Dam: Hilltown Julep 6 H2

By: Brocklehill Sensation ET

8.Dam: Hilltown Julep 5 VG

By: Blackaddar Marcus



E C Pendennis Julia

8. East Church Platinum Iris

UK/363361 102649



E C Platinum Iris

0301522522 **PLI +£79** **Born: 20.11.17**

Sire: Tristar Platinum ET **By:** Palmyra Tri-Star Reality EX90

Dam: East Church Stans Iris VG88 LP60 **By:** Milkmaids Stanley

2nd	4626	4.42	3.64	305
-----	------	------	------	-----

3rd	5024	4.58	4.04	252
-----	------	------	------	-----

4th	5038	3.86	3.77	268
-----	------	------	------	-----

5th	6181	4.54	3.49	295
-----	------	------	------	-----

6th	6534	4.29	3.41	304
-----	------	------	------	-----

7th	5611	4.56	3.59	305
-----	------	------	------	-----

8th	5754	4.84	3.32	256
-----	------	------	------	-----

9th	5875	4.42	3.45	295
-----	------	------	------	-----

10th	4892	4.17	3.46	305
------	------	------	------	-----

11th	5523	3.90	3.25	263
------	------	------	------	-----

G.Dam: East Church Savage Irene H283 **By:** Blackaddar MM Savage

1st	4627	4.32	3.27	305
-----	------	------	------	-----

3.Dam: East Church Irina VG87 **By:** Stevenson's Benjamin

2nd	5360	4.27	3.48	305
-----	------	------	------	-----

3rd	5250	4.56	3.59	305
-----	------	------	------	-----

4.Dam: East Church Isla H3 **By:** Hammonds Oracle EX

9. East Church Platinum Pansy

UK/363361 302651

0301522516 PLI +£93

Born: 26.11.17

Sire: Tristar Platinum ET **By:** Palmyra Tri-Star Reality EX90

Dam: East Church Donovans Pansy GP82 **By:** East Church Donovan

1st	5091	4.01	3.44	305
-----	------	------	------	-----

2nd	4965	4.02	3.31	305
-----	------	------	------	-----

G.Dam: East Church Potters Pansy **By:** Des Prairies Potter

3rd	3812	3.83	3.20	278
-----	------	------	------	-----

4th	4066	3.68	3.24	241
-----	------	------	------	-----

5th	5073	3.86	3.30	292
-----	------	------	------	-----

3.Dam: East Church Robusts Pansy VG85 **By:** East Church Robust EX90

1st	4572	3.92	3.31	305
-----	------	------	------	-----

2nd	6515	4.02	3.29	305
-----	------	------	------	-----

3rd	6249	3.42	3.22	293
-----	------	------	------	-----

5th	7945	3.53	3.23	305
-----	------	------	------	-----

4.Dam: East Church Misty Panjeera EX92 **By:** Meikle Laught Autumn Mist EX

5.Dam: Bigginvale Pansy 10 **By:** Bankend Statesman VG

6.Dam: Bigginvale Pansy 5 H283 **By:** Killoch Propellor EX

7.Dam: Bigginvale Pansy 3 H2 **By:** Killoch Power Drill

8.Dam: Middle Mayfield Pansy 10 GP LP70 **By:** Pant Outlaw

KIVELLS

Established 1885

www.kivells.com



Proud to be working with East Church Ayrshires

*The Annual South West
Ayrshire Show & Sale*

**of Pedigree Ayrshires on behalf of
leading breeders**

**To include a consignment of
30 Organic Ayrshires from East Church**

**Friday 11th May 2018
Exeter Livestock Centre**

**Further entries for cataloguing by 27th April
to 01392 251261, livestock@kivells.com
or Mark Davis 07773 371774**

**See our website for latest sales
www.kivells.com**

Auctioneers:

Mark Bromell: 07966 43001

Mark Davis: 07773 371774

Fieldsman:

Robert Speck: 07909 538520

- Private treaty sales
- On-farm dispersal sales
- Large & small scale dispersals can be removed to the market with full lairage facilities

Kivells...

Ahead of the field!