

# Cattle Services

## (Ayr) Ltd

Winter Catalogue 2016



[www.cattleservices.org](http://www.cattleservices.org)

or find us on Facebook!



Tel: Sam Wake: 07803 515626

Email: [sales@cattleservices.org](mailto:sales@cattleservices.org)

Tel: Office: 01292 471292

Inside -  
Genetics to enhance  
your herd!

# Cattle Services (Ayr) Ltd Chart Leaders - Dec. '16

<b>Type Merit</b>	Changue Stadium	(Stadel x Nelson)	2.2
	West Mossgiel Modern Reality	(Reality x Amadeus)	1.9
	Waxham Executive	(Nelson x Drum Major)	1.9
	Ardmore Crown Napier	(Triple Crown x Patrick)	1.8
	West Mossgiel Class Talent	(Talent x Ranger)	1.7
<b>Mammary</b>	Wroughton Lord Winston	(Nelson x First Lord)	2.3
	West Mossgiel Class Talent	(Talent x Ranger)	2.2
	Changue Stadium	(Stadel x Nelson)	2.0
	Halmyre Urr Lieutenant	(Admiral x Sir Lawrence)	1.7
	Haresfoot Simply Perfek	(Remington x Simply Red)	1.6
<b>Feet &amp; Legs</b>	West Mossgiel Modern Reality	(Reality x Amadeus)	2.4
	Changue Stadium	(Stadel x Nelson)	2.2
	West Mossgiel Aramis	(Sand Ranger x Redmarker)	2.0
	Waxham Executive	(Nelson x Drum Major)	1.9
	Bigginvale Destination	(Ambition x First Command)	1.8
<b>Milk Kgs</b>	Muirston Top Brass	(Tulip x Ranger)	907
	West Mossgiel Aramis	(Ranger x Red Marker)	625
	Brieryside Golden Sand	(Sand Ranger x Inspiration)	483
	Rosehill Real McCoy	(Reality x Blackthorn)	466
	Changue Back Up	(Backgard x Lord Ontario)	396
<b>PLI £</b>	Hilltown Oblique	(Oblique x Triple Crown)	356
	West Mossgiel Modern Reality	(Reality x Amadeus)	348
	Ardmore Crown Napier	(Patrick x Triple Crown)	240
	Changue Stadium	(Stadel x Nelson)	213
	East Church Patrolman	(Oblique x Pardner)	191
<b>Fat %</b>	Haresfoot Panache	(Ristourn x Enigma)	0.20
	Stevenson's Integrity	(Burnished Gold x Jubilant)	0.19
	Rosehill Rhythmajig	(Rhythm x Blackthorn)	0.15
	Bigginvale Destination	(Ambition x First Command)	0.12
	Hilltown Oblique	(Oblique x Triple Crown)	0.12
<b>Protein %</b>	Stamford Witness	(Jurist x First Command)	0.13
	Hunnington BBK Easlad	(BB Kellogg x Super Star)	0.07
	Hilltown Oblique	(Oblique x Triple Crown)	0.06
	Stamford First Quality	(First Prize x Milk Machine)	0.06
	Bigginvale Destination	(Ambition x First Command)	0.06
<b>Cell Count</b>	West Mossgiel Modern Reality	(Reality x Amadeus)	-18
	Maple-Dell Modem Diego	(Modem x Zorro)	-14
	Ardmore Crown Napier	(Triple Crown x Patrick)	-13
	Stamford First Quality	(First Prize x Milk Machine)	-12
	Haresfoot Panache	(Ristourn x Enigma)	-12
<b>Fertility Index</b>	West Mossgiel Modern Reality	(Reality x Amadeus)	8.3
	Twemlow Major Threat	(Major Red x Heligo)	7.0
	Hilltown Oblique	(Oblique x Triple Crown)	6.1
	Brocklehill Kestral	(Garth x Super Willy)	6.1
	Haresfoot Panache	(Ristourn x Enigma)	4.8
<b>Lifespan</b>	Changue Stadium	(Stadel x Nelson)	0.5
	Hilltown Oblique	(Oblique x Triple Crown)	0.4
	West Mossgiel Modern Reality	(Reality x Amadeus)	0.3
	Ardmore Crown Napier	(Triple Crown x Patrick)	0.3
	West Mossgiel Class Talent	(Talent x Ranger)	0.3

Fat%



High Type



Prot.%



High Production



Cover images by Ginger & Pickles

Front Cover - Ayrshires in Derbyshire

All figures supplied by AHDB Dairy. Cattle Services (Ayr) Ltd abide by the AHDB Dairy and Holstein UK established Code of Advertising.

# Ardmore Crown Napier<sup>CF</sup>

H. B. No: 03000006180947  
D/O/B: 23/01/2003  
% Ayrshire: 100

Sire of  
the 2016  
Agriscot  
Ayrshire  
Champion

Triple Crown x EX 93 Patrick x EX 91 Crown Jewel x EX Heart Of Gold x VG Viewfield



Daughter: Cuthill Towers Crown Ray

**PLI**  
**£240**

**Proven Sire**



PTA: Proven Sire: Ayr. Base: Dec. 2016: 1016 Daus. / 251 Herds Prod. Rel 99% PLI Rel 97%

Milk	+75 Kgs	Prot.	-0.02%	Lifespan	+0.3	Somatic	Rel 98%
Fat	0.00%	PLI	£240	Fertility Index	+2.1	Cell Count	-13

Type - Dec. 2016	-2	-1	0	1	2	
Type Merit						1.8
Mammary						1.4
Legs & Feet						1.1
Stature						-1.6
Chest Width						-0.6
Body Depth						-0.9
Rump Angle						1.2
Rump Width						-0.6
Rear Leg Side						0.5
Foot Angle						-0.7
Fore Udder Att						1.6
Rear Udder Height						1.2
Udder Support						4.7
Udder Depth						0.7
Front Teat Pl						3.7
Teat Length						-2.4
Teat Pos Side						0.0
Temperament						0.0
Ease Of Milk						-1.7

A third of  
his daughters  
have classified  
VG as 2 year  
olds

# Brocklehill Kestral

H. B. No: 03000006181683

D/O/B: 02/05/2010

% Ayrshire: 100

Valley Garth x EX Super Willy x Amazing Grace x Peking

**Fat%**  
**+0.07**

Proven Sire



*Lucinda Morgan*

Daughter: Sandyford Kestral Marsela

PTA: Proven Sire: Ayr. Base: Dec. 2016: 14 Daus. / 12 Herds Prod. Rel 73% PLI Rel 65%

Milk	-199 Kgs	Prot.	+0.05%	Lifespan	+0.2	Somatic	Rel 43%
Fat	+0.07%	PLI	£136	Fertility Index	+6.1	Cell Count	-3

Type - Dec. 2016	-2	-1	0	1	2	
Type Merit						0.5
Mammary						-0.6
Legs & Feet						1.1
Stature						-0.6
Chest Width						-0.8
Body Depth						-1.1
Rump Angle						-0.3
Rump Width						0.4
Rear Leg Side						1.4
Foot Angle						-1.3
Fore Udder Att						-0.6
Rear Udder Height						1.4
Udder Support						-2.1
Udder Depth						-1.6
Front Teat Pl						0.1
Teat Length						-0.9
Teat Pos Side						1.5
Temperament						0.1
Ease Of Milk						1.9

# East Church Patrolman

H. B. No: 03000006181838  
D/O/B: 30/12/2010  
% Ayrshire: 100

Daughters  
have outstanding  
production

J. Oblique x EX 92 Pardner x EX Amigo x First Command



*Lucinda Morgan*

East Church Patrolman

**PLI  
£191**

**Proven Sire**



PTA: Proven Sire: Ayr. Base: Dec. 2016: 32 Daus. / 18 Herds Prod. Rel 84% PLI Rel 70%

Milk	+177 Kgs	Prot.	0.00%	Lifespan	+0.2	Somatic	Rel 55%
Fat	-0.06%	PLI	£191	Fertility Index	+1.5	Cell Count	-8

Type - Dec. 2016	-2	-1	0	1	2	
Type Merit						1.1
Mammary						0.3
Legs & Feet						1.0
Stature						-0.1
Chest Width						-1.7
Body Depth						-1.8
Rump Angle						1.3
Rump Width						0.0
Rear Leg Side						1.1
Foot Angle						-0.3
Fore Udder Att						-2.3
Rear Udder Height						-0.5
Udder Support						0.2
Udder Depth						0.2
Front Teat Pl						1.2
Teat Length						-1.5
Teat Pos Side						0.1
Temperament						N/A
Ease Of Milk						N/A

# Hilltown Oblique



H. B. No: 03000006181738  
D/O/B: 20/12/2010  
% Ayrshire: 100

One of the  
best available  
Ayrshire bulls  
in the world

J. Oblique x EX 94 Triple Crown x EX Pearl Reef x EX Juror



Daughter: Butterbesley Obliques May

PLI  
£356

Proven Sire



PTA: Proven Sire: Ayr. Base: Dec. 2016: 56 Daus. / 29 Herds Prod. Rel 89% PLI Rel 76%

Milk	+108 Kgs	Prot.	+0.06%	Lifespan	+0.4	Somatic	Rel 60%
Fat	+0.12%	PLI	£356	Fertility Index	+6.1	Cell Count	-10

Type - Dec. 2016	-2	-1	0	1	2	
Type Merit						1.3
Mammary						1.0
Legs & Feet						0.7
Stature						-0.8
Chest Width						0.1
Body Depth						-0.6
Rump Angle						0.3
Rump Width						0.8
Rear Leg Side						-0.1
Foot Angle						-0.3
Fore Udder Att						1.5
Rear Udder Height						-0.2
Udder Support						0.4
Udder Depth						0.5
Front Teat Pl						0.9
Teat Length						-1.1
Teat Pos Side						0.3
Temperament						0.3
Ease Of Milk						-0.4

Rosehill

H. B. No: 03000006181762

D/O/B: 13/02/2011 % Ayrshire: 100

## Real McCoy

Number 1  
UK proven  
production  
sire

Tri-Star Reality x EX 93 Blackthorn x EX 94 Sir Adam x EX Lord Ontario

Milk  
+466

Proven Sire



Daughter: Whitecroft Nellie 54

PTA: Proven Sire: Ayr. Base: Dec. 2016: 46 Daus. / 26 Herds Prod. Rel 90% PLI Rel 75%

Milk	+466 Kgs	Prot.	-0.07%	Lifespan	0.0	Somatic	Rel 71%
Fat	-0.04%	PLI	£181	Fertility Index	+2.2	Cell Count	1

Type - Dec. 2016	-2	-1	0	1	2	
Type Merit						1.2
Mammary						1.1
Legs & Feet						0.9
Stature						0.7
Chest Width						0.2
Body Depth						0.2
Rump Angle						0.2
Rump Width						2.0
Rear Leg Side						1.3
Foot Angle						0.2
Fore Udder Att						-1.2
Rear Udder Height						0.9
Udder Support						1.4
Udder Depth						-0.1
Front Teat Pl						0.0
Teat Length						1.0
Teat Pos Side						2.2
Temperament						-1.1
Ease Of Milk						-0.5

# Bigginvale Destination

Ambition x EX First Command x Noodle x Sundance

H. B. No: 03000007190748

D/O/B: 28/10/2006

% Ayrshire: 90.625

A feet and  
legs specialist



*Lucinda Morgan*

Daughter: Bigginvale Molly 5

PTA: Proven Sire: Ayr. Base: Dec. 2016: 53 Daus. / 16 Herds Prod. Rel 91% PLI Rel 75%

Milk	-213 Kgs	Prot.	+0.06%	Lifespan	+0.2	Somatic	Rel 70%
Fat	+0.12%	PLI	£130	Fertility Index	+3.7	Cell Count	12

**Fat%**  
**+0.12**

Proven Sire



Type - Dec. 2016	-2	-1	0	1	2	
Type Merit						1.7
Mammary						0.9
Legs & Feet						1.8
Stature						-0.3
Chest Width						-0.5
Body Depth						0.0
Rump Angle						-0.8
Rump Width						-1.4
Rear Leg Side						0.4
Foot Angle						0.2
Fore Udder Att						0.0
Rear Udder Height						-1.0
Udder Support						0.2
Udder Depth						0.1
Front Teat Pl						2.5
Teat Length						-3.9
Teat Pos Side						0.0
Temperament						1.6
Ease Of Milk						0.8

A2/A2

# Haresfoot Panache

H. B. No: 03000007190905

D/O/B: 22/08/2009

% Ayrshire: 87.5

Number 1

fat% bull

of the breed

Ristourn x EX 94 Engima x EX 94 Sand Ranger x EX Heligo

Daughter: Beeline Panache Rudi

SCC  
-12

Proven Sire



Jane Steel

PTA: Proven Sire: Ayr. Base: Dec. 2016: 146 Daus. / 42 Herds Prod. Rel 96% PLI Rel 80%

Milk	-16 Kgs	Prot.	+0.03%	Lifespan	+0.1	Somatic	Rel 79%
Fat	+0.2%	PLI	£163	Fertility Index	+4.8	Cell Count	-12

Type - Dec. 2016	-2	-1	0	1	2	
Type Merit						-0.1
Mammary						0.7
Legs & Feet						-0.8
Stature						0.3
Chest Width						-0.3
Body Depth						-0.5
Rump Angle						-2.2
Rump Width						-0.2
Rear Leg Side						-1.1
Foot Angle						1.5
Fore Udder Att						1.5
Rear Udder Height						0.9
Udder Support						-0.9
Udder Depth						1.0
Front Teat Pl						-0.3
Teat Length						1.7
Teat Pos Side						-1.2
Temperament						1.3
Ease Of Milk						-1.1

# Hunnington Mandella

Available UK Mainland Only

H. B. No: 03000007190486  
D/O/B: 22/01/2004  
% Ayrshire: 87.5

Siring  
great cows  
worldwide

Nelson x EX 95 Super Star x EX Blaze Red x Astronomer



Daughter: Knutsford Flo 235

PTA: Proven Sire: Ayr. Base: Dec. 2016: 232 Daus. / 91 Herds Prod. Rel 98% PLI Rel 91%

Milk	+179 Kgs	Prot.	-0.07%	Lifespan	-0.1	Somatic	Rel 91%
Fat	-0.04%	PLI	£5	Fertility Index	-4.2	Cell Count	-9

Type - Dec. 2016	-2	-1	0	1	2	
Type Merit						0.6
Mammary						0.1
Legs & Feet						0.9
Stature						-0.2
Chest Width						-1.3
Body Depth						-0.2
Rump Angle						-0.7
Rump Width						-0.3
Rear Leg Side						-0.1
Foot Angle						-0.1
Fore Udder Att						0.9
Rear Udder Height						-0.2
Udder Support						-0.2
Udder Depth						-0.1
Front Teat Pl						0.1
Teat Length						-0.3
Teat Pos Side						0.4
Temperament						-0.3
Ease Of Milk						1.4

SCC  
-9

Proven Sire



# West Mossgiel Modern Reality

H. B. No: 03000007191027

D/O/B: 27/09/2010 % Ayrshire: 87.5

Number 1

UK proven

SCC sire

T. Reality x EX 93 Amadeus x Redstar Red x Accolade

PLI  
£348

Proven Sire



Daughter: Willowfields Winnie 2

PTA: Proven Sire: Ayr. Base: Dec. 2016: 54 Daus. / 32 Herds Prod. Rel 89% PLI Rel 76%

Milk	+83 Kgs	Prot.	+0.02%	Lifespan	+0.3	Somatic	Rel 62%
Fat	+0.02%	PLI	£348	Fertility Index	+8.3	Cell Count	-18

Type - Dec. 2016	-2	-1	0	1	2	
Type Merit						1.9
Mammary						0.7
Legs & Feet						2.4
Stature						0.3
Chest Width						-0.7
Body Depth						0.3
Rump Angle						-0.6
Rump Width						-0.9
Rear Leg Side						-1.1
Foot Angle						1.9
Fore Udder Att						2.4
Rear Udder Height						0.4
Udder Support						0.7
Udder Depth						1.6
Front Teat Pl						-0.8
Teat Length						0.2
Teat Pos Side						-0.5
Temperament						-1.2
Ease Of Milk						-0.7

# Willhome Challenger

H. B. No: 03000007190994

D/O/B: 30/05/2010

% Ayrshire: 87.5

His first daughters to be classified averaged 83 points

Modem x EX 94 Autumn Gold x VG 88 Dynamic x Finalist

Daughter: Willhome Challenger Amanda



SCC  
-11

Proven Sire



PTA: Proven Sire: Ayr. Base: Dec. 2016: 21 Daus. / 15 Herds Prod. Rel 76% PLI Rel 64%

Milk	+88 Kgs	Prot.	-0.09%	Lifespan	+0.2	Somatic	Rel 39%
Fat	-0.04%	PLI	£26	Fertility Index	-1.9	Cell Count	-11

Type - Dec. 2016	-2	-1	0	1	2	
Type Merit						1.4
Mammary						1.1
Legs & Feet						1.1
Stature						0.9
Chest Width						-0.1
Body Depth						0.1
Rump Angle						0.7
Rump Width						0.2
Rear Leg Side						-0.4
Foot Angle						0.0
Fore Udder Att						0.3
Rear Udder Height						1.2
Udder Support						-0.1
Udder Depth						1.8
Front Teat Pl						-0.3
Teat Length						0.4
Teat Pos Side						-0.1
Temperament						N/A
Ease Of Milk						N/A

# Haresfoot Simply Perfek

H. B. No: 03000007190982  
D/O/B: 25/07/2010 % Ayrshire: 75

One of the  
best linears  
available  
today

Remington x EX 95 Simply Red x EX Heligo x VG P. Rebel

Daughter: Coombe Perfek Peach



Milk  
+190

Proven Sire



PTA: Proven Sire: Ayr. Base: Dec. 2016: 101 Daus. / 29 Herds Prod. Rel 94% PLI Rel 76%

Milk	+190 Kgs	Prot.	-0.06%	Lifespan	+0.3	Somatic	Rel 73%
Fat	-0.1%	PLI	£11	Fertility Index	-0.9	Cell Count	12

Type - Dec. 2016	-2	-1	0	1	2	
Type Merit						1.3
Mammary						1.6
Legs & Feet						0.7
Stature						1.2
Chest Width						1.3
Body Depth						1.1
Rump Angle						0.3
Rump Width						1.4
Rear Leg Side						-1.3
Foot Angle						0.9
Fore Udder Att						-0.2
Rear Udder Height						2.0
Udder Support						2.4
Udder Depth						0.2
Front Teat Pl						0.0
Teat Length						-0.3
Teat Pos Side						3.0
Temperament						-0.6
Ease Of Milk						-2.0

# Hunnington Famous



Herdbook No: 03000006182152

D/O/B: 17/05/2015

% Ayrshire: 100

Prime x EX 93 Easlad x EX Harvest Gold x VG Happy Spirit

**Prot.**  
**+0.02**

Sire Of The  
Future



Hunnington Famous

ETA: Young Sire: Ayr. Base: Dec. '16

Prod. Rel 41%      PLI Rel 36%

Milk                -12 Kgs

Fat                 -0.02%

Prot.                +0.02%

PLI                 £154

Type - Dec. '16

Type Merit    +1.38

# Rosehill Manderville<sup>TF</sup>

Herdbook No: 03000006181948

D/O/B: 27/07/2012

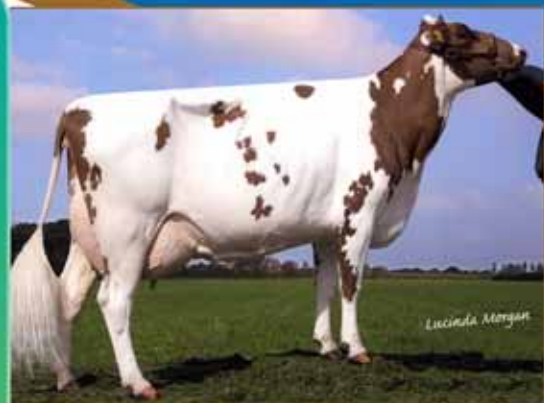
% Ayrshire: 100

Crown Napier x EX 93 Blackthorn  
x EX 94 Sir Adam x EX Ontario x EX J. R.



**Milk**  
**+221**

Sire Of The  
Future



Dam: Rosehill Black Magenta

ETA: Young Sire: Ayr. Base: Dec. '16

Prod. Rel 44%      PLI Rel 41%

Milk                +221 Kgs

Fat                 +0.02%

Prot.                +0.02%

PLI                 £246

Type - Dec. '16

Type Merit    +1.39

**A2IA2**

# Rosehill Vitality<sup>TF</sup>

Herdbook No: 03000006181894

D/O/B: 02/01/2012

% Ayrshire: 100

**Available  
Sexed**Tri-Star Reality x EX 96 Blackthorn x GP 84 Nucleus  
x VG 88 Commander

Daughter: Sandyford Vitality Spottie

ETA: Young Sire: Ayr. Base: Dec. '16

Prod. Rel 43%      PLI Rel 39%

Milk            +220 Kgs

Fat             0.00%

Prot.          -0.02%

PLI            £122

Type - Dec. '16

Type Merit +1.14

**Milk  
+220****Sire Of The  
Future**

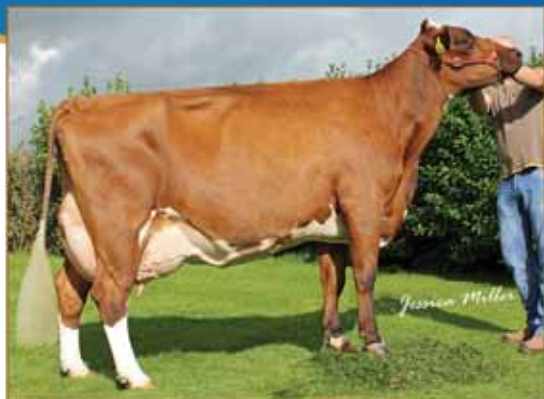
# Whitecroft Furtado

Herdbook No: 03000006181936

D/O/B: 23/05/2012

% Ayrshire: 100

Burdette x EX 94 First Lord x EX 94 Triple Prime x EX Murphy x EX 93 Trident



Dam: Whitecroft Nellie 38

ETA: Young Sire: Ayr. Base: Dec. '16

Prod. Rel 43%      PLI Rel 38%

Milk            +288 Kgs

Fat             -0.07%

Prot.          -0.03%

PLI            £243

Type - Dec. '16

Type Merit +1.26

**Milk  
+288****Sire Of The  
Future**

**A2/A2**

# Swaites Nickle

Herdbook No: 03000006182031

D/O/B: 15/10/2013

% Ayrshire: 93.75

Panache x EX 93 Blackthorn x Ice Man

**Fat%**  
**+0.06****Sire Of The  
Future**

ETA: Young Sire: Ayr. Base: Dec. '16

Prod. Rel 42%    PLI Rel 35%

Milk            +136 Kgs

Fat              +0.06%

Prot.            +0.03%

PLI              £126

Type - Dec. '16

Type Merit    +0.44

Dam: Swaites Nonny 5

# Gwynnog Primetime

Herdbook No: 03000007191189

D/O/B: 29/04/2013

% Ayrshire: 87.5

Prime x EX 95 Napier x EX 95 Emerald x EX 93 Ranger

**Fat%**  
**+0.05****Sire Of The  
Future**

ETA: Young Sire: Ayr. Base: Dec. '16

Prod. Rel 35%    PLI Rel 32%

Milk            +112 Kgs

Fat              +0.05%

Prot.            +0.01%

PLI              £216

Type - Dec. '16

Type Merit    +1.68

Daughter: Gwynnog Primetime Sandy Rose

# Troutbeck Skyfall

Burdette x EX 93 Amadeus x Redstar

Herdbook No: 03000007191175  
D/O/B: 13/11/2012  
% Ayrshire: 87.5



Daughter: Bigginvale Judy 19

ETA: Young Sire: Ayr. Base: Dec. '16

Prod. Rel 43%    PLI Rel 39%

Milk	+54 Kgs
Fat	+0.05%
Prot.	+0.03%
PLI	£235

Type - Dec. '16  
Type Merit +1.15

**Fat**  
**+0.05**

Sire Of The  
Future

# Brieryside Snowman

Mandella X EX 93 Executive x VG 87 Superior x H1 87 Inspiration x EX Commander  
x VG Triple Top x VG Dictator x EX Pure Line

Herdbook No: 03000007191317  
D/O/B: 29/01/2015  
% Ayrshire: 81.25



Dam: Brieryside Snowdrop 5

ETA: Young Sire: Ayr. Base: Dec. '16

Prod. Rel 42%    PLI Rel 36%

Milk	+239 Kgs
Fat	-0.09%
Prot.	-0.05%
PLI	£43

Type - Dec. '16  
Type Merit +1.01

**Milk**  
**+239**

Sire Of The  
Future

**A2/A2**

# Sandyford Supreme

Blackthorn x EX 97 Chatter R x VG Eagan

Herdbook No: 03000007191248

D/O/B: 20/02/2014

% Ayrshire: 75

**Available  
Sexed**
**Type  
+0.84**
**Sire Of The  
Future**


Sandyford Supreme

ETA: Young Sire: Ayr. Base: Dec. '16

Prod. Rel 42%    PLI Rel 38%

Milk            +83 Kgs

Fat              -0.05%

Prot.            0.00%

PLI              £-85

Type - Dec. '16

Type Merit    +0.84

# Sandyford Triclo

Tri-Star Reality x EX 97 Chatter T x VG Eagan

Herdbook No: 03000007191257

D/O/B: 19/02/2014

% Ayrshire: 75

**Available  
Sexed**
**Milk  
+380**
**Sire Of The  
Future**


Sandyford Triclo

ETA: Young Sire: Ayr. Base: Dec. '16

Prod. Rel 41%    PLI Rel 37%

Milk            +380 Kgs

Fat              -0.08%

Prot.            -0.07%

PLI              £92

Type - Dec. '16

Type Merit    +0.84

# Sires With Stock Available.

Please enquire for a great deal.

Attwell Amadeus

Auchensale BL Jurist

Auchensale Black Pearl

Auchensale Lord Potter

Auchensale Star Performer

Bankend Photo Finish

Bankend Urgent Request

Bellfield Top Quality

Brieryside Golden Sand

Brocklehill Beau Supreme

Brocklehill Buccaneer

Brocklehill Equerry

Brocklehill Harvest Gold

Brocklehill Hercules

Carnell Asset Maker

Carnell Bright Crown

Castern Thunder

Changue Back Up

Changue Tryst

Changue Farm Red Robin

Glengarry Selwood Future

Grandage Bright Spark

Greenlane Marksman

Hawksfield Blue Sky

Highway Billy Ruffian

Hunnington BBK Easlad

Hunday Major Red

Schreur Ihlmano Red

Knowe Dons Valley

Knutsford White Flash

Maple Dell Diego

McCornick Navigator

Millers Remus Bellman

Plum Bottom Tridents Lot

Ravenhill Enigma

Ravenhill Enterprise

Rosedale Mr Magic

Stamford Henrik

Stamford High Definition

Stamford Witness

Stevenson's Saltire

Stretton Triple Prime

Twemlow Major Threat

Woodland View Destiny

Woodland View Paddy

Woodland View Pardner

Woodland View Pedro

Wroughton Lord Winston

Yellow Briar Journalist

We also have beef semen available - Belgian Blue and Triple Blue.

# Improve Your Herd With Our Outstanding Ayrshire Genetics



[www.cattleservices.org](http://www.cattleservices.org)  
or find us on Facebook!

Tel: Sam Wake: 07803 515626

Email: [sales@cattleservices.org](mailto:sales@cattleservices.org)

Tel: Office: 01292 471292