



WINTER 2021 SIRE CATALOGUE



Welcome



Welcome to the Winter 2021 sire directory from Cattle Services Ayr Ltd. The catalogue is full of breed leading sires that are available to the Worldwide market today. Included are 4 sires that are available in the most advanced Sexed product available SEXED ULTRA 4M. This now includes Beechmount Magic Mike, the Brieryside Magic son of the successful show cow Beechmount Marie Girl 23. Another new sire available is Royal Flush Sea King. Sea King comes from one of the breeds best families the Sea Lily's and is sired by West Mossgiel Modern Class. He offers breeders the opportunity to use a sire that will breed daughters of high type but also cattle that will excel for production and a sire who's pedigree is also free of many of today's prominent bloodlines. You will also see that all our none proven sires now have a genomic proof, this is to give you more confidence in a sire as it offers more information about how the said sire will transmit different traits to their offspring. Whatever your breeding goals are there is a bull to suit you in this catalogue. If you cannot find one, then please let us know and we can send you a list of all our available sires both old and new.

FRONT COVER

Troutbeck Skyfall Peony Rose EX94 (3E) the National Ayrshire Champion from 2021. Peony Rose is sired by Troutbeck Skyfall who has been one of the biggest selling sires for Cattle Services in the last 5 years.
Image Jane Steel

BACK COVER

4 daughters of Pam Ayrs Hawaiian who was the Premier Sire at the All Breeds All Britain Calf Show in 2021. Look out for some exciting news regarding Hawaiian in the New Year.
Halmyre Urr Ladybird 564
Wigboro Wick Hawaiian Helena
Beca Hawaiian Waiola
Creech Hill Hawaiian Blossom
Images by Lucinda Morgan

Contact: Sam Wake: 07803 515626 Office: 01292 471292
Email: sales@cattleservices.org www.cattleservices.org



Sheila Metcalfe

CUTHILL TOWERS BUSTER A2/A2



Daughter: Cuthill Towers Buster Bramble



Daughter: Cuthill Towers Buster Rhay



Daughter: Whitecroft Ruth 170 VG85

AYR % 84.375		PEDIGREE HILLTOWN OBLIQUE X EX94 CUTHILL TOWERS WHITE KNIGHT X VG87 CUTHILL TOWERS MR TWISTER	
BREED CODE 03	HERD BOOK NUMBER 03000007191416	D.O.B. 04/09/16	
PRODUCTION PROOF			
PLI	£185		
MILK KG	382		
FAT KG	19.3		
FAT %	0.05		
PROTEIN KG	7.1		
PROTEIN %	-0.08		
RELIABILITY	69%		
DAUGHTERS	28		
HERDS	12		
DAUGHTER PROVEN (12/21)			
MANAGEMENT			
SOMATIC CELL COUNT	11		
LIFESPAN	52		
FERTILITY INDEX	-0.1		

DAUGHTER CONFORMATION			
TYPE MERIT	+1.9		EXCELLENT
MAMMARY	+1.2		EXCELLENT
LEGS & FEET	+1.4		EXCELLENT
STATURE	-1.3		154CM
CHEST WIDTH	+0.3		WIDE
BODY DEPTH	-1.9		DEEP
ANGULARITY	-0.6		OPEN RIB
RUMP ANGLE	-1		LOW PINS
RUMP WIDTH	+0.4		WIDE
REAR LEG SIDE	-0.3		SICKLED
FOOT ANGLE	+0.7		STEEP
FORE UDDER ATT	+2.4		TIGHT
REAR UDDER HT	+1		VERY HIGH
UDDER SUPPORT	+0.3		STRONG
UDDER DEPTH	+0.7		20CM ABOVE
FRONT TREAT PL	+0.7		CLOSE
TEAT LENGTH	-1.3		LONG
TEAT POS. SIDE	+0.9		APART

After bursting into the proven sire ranks in August, he has generated many repeat orders from breeders. His daughters are exceling in the field, show ring and the parlour.

SWAITES NICKLE A2/A2



Daughter: Jamara Nickle Gladys EX90



Dam: Swaites Nonny 5 EX93 2E



Daughter: Jamara Nickle Gladys EX90

AYR % **93.75** PEDIGREE
HARESFOOT PANACHE
 X EX93 ROSEHILL BLACKTHORN X GP84 KELLCREST
 ICEMAN X H281 BANKEND LORD ONTARIO

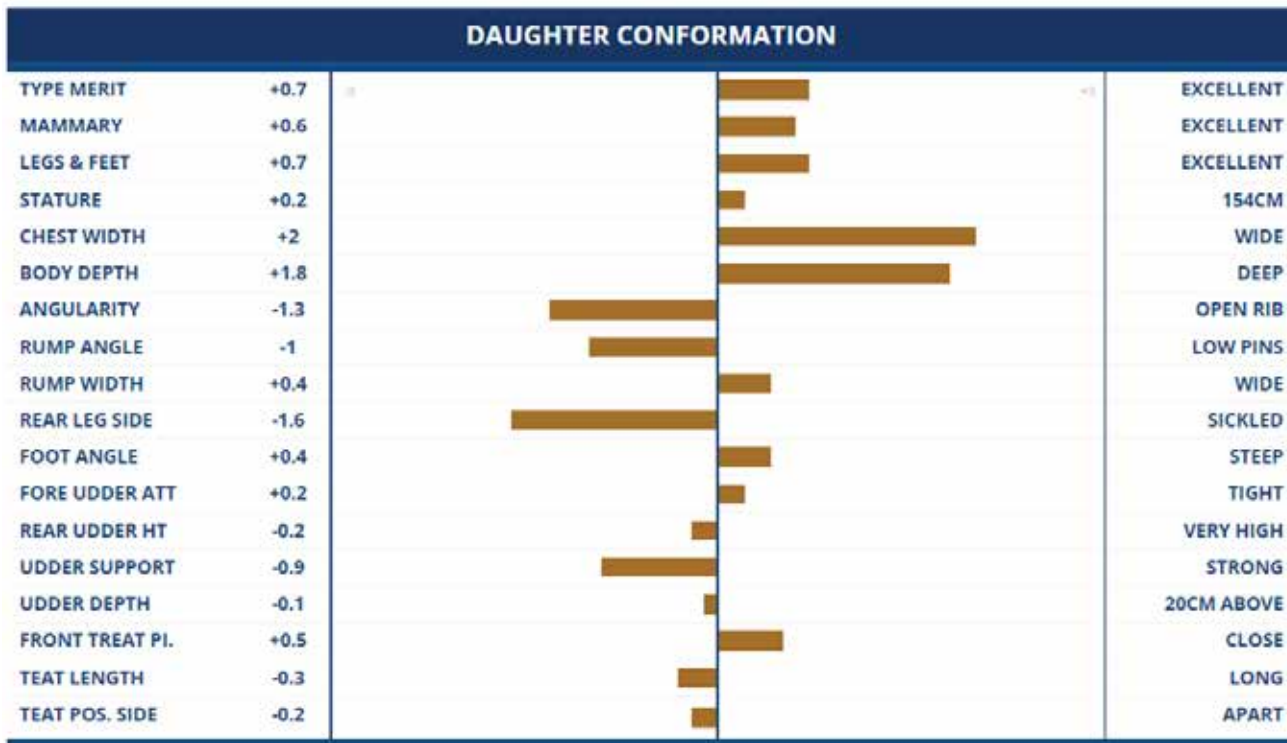
BREED CODE	HERD BOOK NUMBER	D.O.B.
03	000006182031	15.10.13

PRODUCTION PROOF

PLI	£198
MILK KG	214
FAT KG	14
FAT %	0.08
PROTEIN KG	6.4
PROTEIN %	-0.01
RELIABILITY	71%
DAUGHTERS	51
HERDS	20
DAUGHTER PROVEN PTAT 2021 (12/21)	

MANAGEMENT

SOMATIC CELL COUNT	-9
LIFESPAN	52
FERTILITY INDEX	5.3



The well proven son of Haresfoot Panache continues to breed daughters that are opened framed cows with a fantastic will to milk His 1st crop daughters have now grown into mature cows that catch the eye throughout the country.

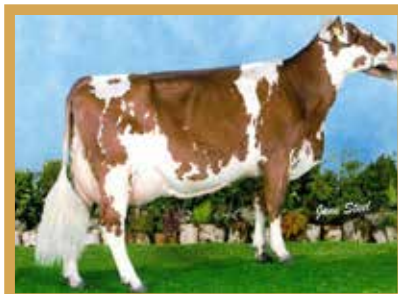
RAVENHILL VICTORY



Elite Sire



Daughter: Heydale Summertime VG85



Dam: Ravenhill Ethel 350 VG88



Daughter: Swaites Dilly 12

AYR %
100

PEDIGREE
ROSEHILL VITALITY X VG88 CELANDINE FIRST LORD
X EX94 BLACKADDAR MILK MACHINE X BALLYCLAN
FIRST COMMAND

BREED CODE

03

HERD BOOK NUMBER

03000006182211

D.O.B.

21.09.15

PRODUCTION PROOF

PLI	£70
MILK KG	176
FAT KG	8
FAT %	0.07
PROTEIN KG	4.3
PROTEIN %	-0.02
RELIABILITY	76%
DAUGHTERS	47
HERDS	28
DAUGHTER PROVEN PTAT 2021 (12/21)	

MANAGEMENT

SOMATIC CELL COUNT	-4
LIFESPAN	55
FERTILITY INDEX	-4.3

DAUGHTER CONFORMATION

TYPE MERIT	+1.1	EXCELLENT
MAMMARY	+0.5	EXCELLENT
LEGS & FEET	+0.8	EXCELLENT
STATURE	+0.2	154CM
CHEST WIDTH	+0.5	WIDE
BODY DEPTH	-1.3	DEEP
ANGULARITY	-1	OPEN RIB
RUMP ANGLE	+2.2	LOW PINS
RUMP WIDTH	+0.2	WIDE
REAR LEG SIDE	-2.1	SICKLED
FOOT ANGLE	+1.8	STEEP
FORE UDDER ATT	+1.4	TIGHT
REAR UDDER HT	-1.6	VERY HIGH
UDDER SUPPORT	-1	STRONG
UDDER DEPTH	+0.3	20CM ABOVE
FRONT TREAT PL.	-0.4	CLOSE
TEAT LENGTH	+0.7	LONG
TEAT POS. SIDE	-0.3	APART

The Victory daughters are real cow makers that develop throughout their first lactation with many breeders commenting on their natural will to milk. They have Quality udders that are made to last for many lactations.

CHANGUE STADIUM (UK MAINLAND ONLY)



Daughter: Cuthill Towers Stadium Raffia



Daughter: Changue Martha 49 EX95



Daughter: Marleycote Sea Lily 29 VG86

AYR % 37.5	PEDIGREE STADEL X EX92 MCCORNICK NELSON X VG86 MARTY X H282 BANKEND LORD ONTARIO X EX90 BROCKLEHILL HAPPY SPIRIT	
BREED CODE 03	HERD BOOK NUMBER 03000007190526	D.O.B. 20.04.04

PRODUCTION PROOF	
PLI	£121
MILK KG	256
FAT KG	8.8
FAT %	-0.03
PROTEIN KG	2.7
PROTEIN %	-0.09
RELIABILITY	85%
DAUGHTERS	87
HERDS	26
DAUGHTER PROVEN PTAT 2021 (12/21)	

MANAGEMENT	
SOMATIC CELL COUNT	-2
LIFESPAN	122
FERTILITY INDEX	-7

DAUGHTER CONFORMATION			
TYPE MERIT	+1.8		EXCELLENT
MAMMARY	+1.6		EXCELLENT
LEGS & FEET	+1.1		EXCELLENT
STATURE	+0.1		154CM
CHEST WIDTH	-0.2		WIDE
BODY DEPTH	-1.7		DEEP
ANGULARITY	+0.5		OPEN RIB
RUMP ANGLE	-1.4		LOW PINS
RUMP WIDTH	-1.3		WIDE
REAR LEG SIDE	-3.2		SICKLED
FOOT ANGLE	+2.8		STEEP
FORE UDDER ATT	+1.9		TIGHT
REAR UDDER HT	+2.5		VERY HIGH
UDDER SUPPORT	-0.1		STRONG
UDDER DEPTH	+4.1		20CM ABOVE
FRONT TREAT PI.	+0.2		CLOSE
TEAT LENGTH	-0.6		LONG
TEAT POS. SIDE	+2.5		APART

Stadium is a well proven sire with 2nd crop daughters pleasing as much as the first did. One of these Cuthill Towers Stadium Raffia was recently Heifer Champion at the Great Yorkshire Show.

ARDMORE JEEPERS CREEPERS



Genomic Sire



Dam: Ardmore Janet 110 EX94 4E



Ardmore Jeepers Creepers



Maternal Sister: Ardmore Janet 136 VG88

AYR %
75

PEDIGREE
WEST MOSSGIEL MODERN CLASS X EX94 DE LA
PLAINE PRIME X VG88 ARDMORE CROWN NAPIER

BREED CODE
03

HERD BOOK NUMBER
03000007191433

D.O.B.
02/10/18

PRODUCTION PROOF

PLI	£187
MILK KG	99
FAT KG	6.2
FAT %	0.03
PROTEIN KG	2.8
PROTEIN %	-0.01
RELIABILITY	47%
DAUGHTERS	0
YOUNG GENOMIC INDEX (12/21)	

MANAGEMENT

SOMATIC CELL COUNT	-11
LIFESPAN	85
FERTILITY INDEX	4.7

DAUGHTER CONFORMATION

TYPE MERIT	+1.1		EXCELLENT
MAMMARY	+1.1		EXCELLENT
LEGS & FEET	+0.8		EXCELLENT
STATURE	-0.3		154CM
CHEST WIDTH	-0.1		WIDE
BODY DEPTH	+0.5		DEEP
ANGULARITY	+0		OPEN RIB
RUMP ANGLE	-0.6		LOW PINS
RUMP WIDTH	-0.1		WIDE
REAR LEG SIDE	-0.8		SICKLED
FOOT ANGLE	+0.9		STEEP
FORE UDDER ATT	+1.3		TIGHT
REAR UDDER HT	+0.3		VERY HIGH
UDDER SUPPORT	+1.4		STRONG
UDDER DEPTH	+2.1		20CM ABOVE
FRONT TREAT PL.	+0.7		CLOSE
TEAT LENGTH	-0.8		LONG

The first Jeepers Creepers calves that have been born are long dairy calves that catch the eye in calf barns across the UK. He has received many favourable comments from breeders about calves being born easily who then grow into super heifers. Jeepers Creepers is one of the highest health trait sires available in the UK excelling for Fertility, Lifespan and Somatic Cell Count.

ROYAL FLUSH SEA KING

EXPORT READY
Sexed **ULTRA 4M**

Genomic
Sire



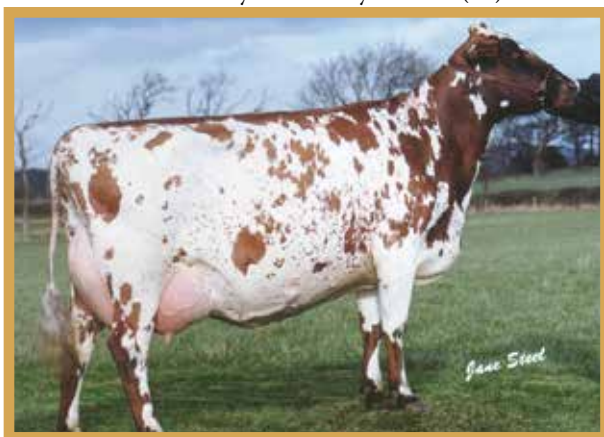
Dam: Marleycote Sea Lily 29 VG86 2Yr



2nd Dam: Marleycote Sea Lily 23 EX92 3E



3rd Dam Marleycote Sea Lily 14 EX94 (2E)



5th Dam: Marleycote Sea Lily 29 EX93 (3E)

AYR %
59.37

PEDIGREE
WEST MOSSGIEL MODERN CLASS X VG86 CHANGUE
STADIUM X EX92 DE LA PLAINE PRIME X EX94 DES
PRAIRIES POTTER X VG88 HORIZON RANGER RED X
EX93 CUTHILL TOWERS AUTUMN GOLD

BREED CODE

03

HERD BOOK NUMBER

03000007191652

D.O.B.

23/08/2020

PRODUCTION PROOF

PLI	£47
MILK KG	149
FAT KG	4.5
FAT %	-0.03
PROTEIN KG	2.5
PROTEIN %	-0.04
RELIABILITY	38%
DAUGHTERS	0
HERDS	0
YOUNG GENOMIC INDEX PTAT 2021 (12/21)	

MANAGEMENT

SOMATIC CELL COUNT	0
LIFESPAN	15
FERTILITY INDEX	1.1

DAUGHTER CONFORMATION

TYPE MERIT	+0.1				EXCELLENT
MAMMARY	+0.2				EXCELLENT
LEGS & FEET	+0.2				EXCELLENT
STATURE	+0.3				154CM
CHEST WIDTH	+0.4				WIDE
BODY DEPTH	+0.6				DEEP
ANGULARITY	+0.3				OPEN RIB
RUMP ANGLE	-1.1				LOW PINS
RUMP WIDTH	+0				WIDE
REAR LEG SIDE	-0.7				SICKLED
FOOT ANGLE	+0.8				STEEP
FORE UDDER ATT	+0.7				TIGHT
REAR UDDER HT	+0				VERY HIGH
UDDER SUPPORT	+0.1				STRONG
UDDER DEPTH	+0.7				20CM ABOVE
FRONT TREAT PL.	-0.8				CLOSE
TEAT LENGTH	+0.6				LONG

A new sire from the famous Sea Lily family at Marleycote.

The Sea Lily family is renowned for breeding cows with a will to milk with the added bonus of producing a real special one ! Many breeders were impressed with Sea Kings grand dam and 2 maternal sisters on view at Marleycote during the AGM visit in the summer.

Sea King's sire West Mossgiel Modern Class breeds daughters that exhibit great power throughout whilst maintaining femininity and dairyness.

Sea King offers breeders the chance to use a blended sire from one of the best Ayrshire families in the UK.

BRIERYSIDE HAIL



Dam: Brieryside Oblique Cherry EX94 3E



Brieryside Hail



Dam: Brieryside Oblique Cherry EX94 3E

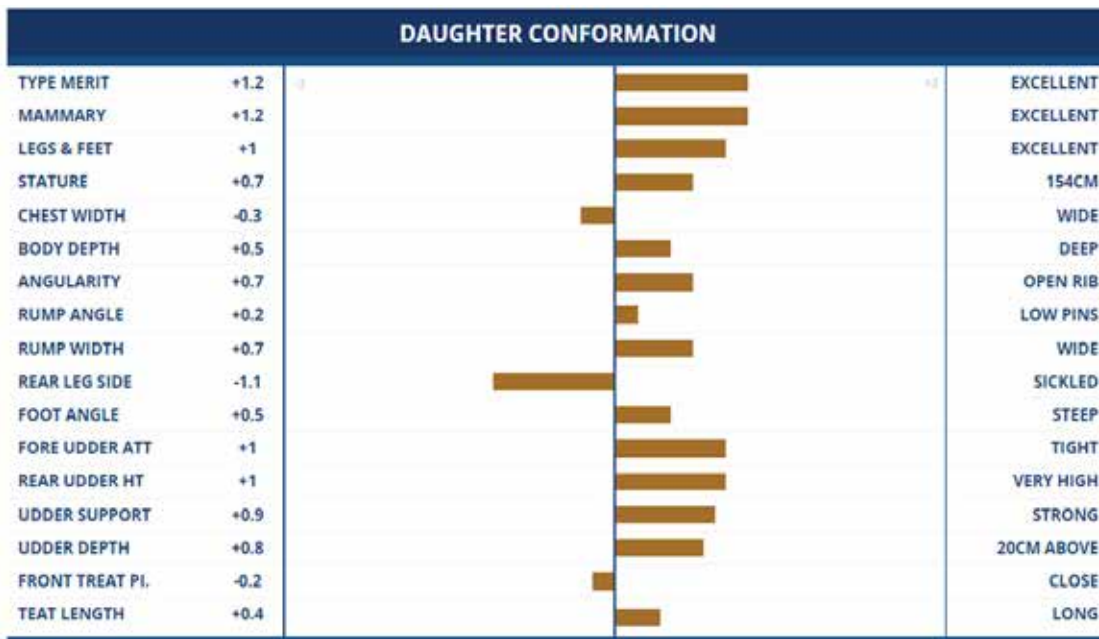
AYR % 82.81	PEDIGREE DE LA PLAINE VICKING X EX94 JELYCA OBLIQUE X VG87 NORMEAD SUPREME X H283 BRIERYSIDE HARLEQUIN X VG87 RAVENHILL ENTREPRENEUR	
BREED CODE 03	HERD BOOK NUMBER 0300000711526	D.O.B. 08/09/18

PRODUCTION PROOF

PLI	£208
MILK KG	189
FAT KG	14
FAT %	0.1
PROTEIN KG	5.8
PROTEIN %	-0.01
RELIABILITY	47%
DAUGHTERS	0
HERDS	0
YOUNG GENOMIC INDEX (12/21)	

MANAGEMENT

SOMATIC CELL COUNT	-5
LIFESPAN	36
FERTILITY INDEX	5.5



Hail is one of the highest Genomic sires available, his figures speak for themselves. His dam Brieryside Oblique Cherry is recently fresh with her 6th calf after a lactation of 12,427 kg at 4.68% fat and 3.21% protein in her 5th lactation. His calves are strong powerful calves who exhibit great width throughout. Many breeders are using Hail again in their breeding programs after being very impressed with their first calves.

BEECHMOUNT MAGIC MIKE A2/A2



Genomic Sire



Beechmount Magic Mike



Dam: Beechmount Marie Girl 11 EX93



Maternal Sister: Beechmount Marie Girl 23

AYR % 85.94	PEDIGREE BRIERYSIDE MAGIC X EX93 HARESFOOT PANACHE X EX92 BEECHMOUNT TRISTAN X EX90 LARGYVALE DERRY X EX92 MCCORNICK NELSON X EX92 BALLYCLAN FIRST COMMAND	
BREED CODE 03	HERD BOOK NUMBER 03000007191632	D.O.B. 28/12/19
PRODUCTION PROOF		
PLI	£142	
MILK KG	257	
FAT KG	12.5	
FAT %	0.03	
PROTEIN KG	7.7	
PROTEIN %	-0.01	
RELIABILITY	43%	
DAUGHTERS	0	
HERDS	0	
YOUNG GENOMIC INDEX (12/21)		
MANAGEMENT		
SOMATIC CELL COUNT	-4	
LIFESPAN	15	
FERTILITY INDEX	-2.4	

DAUGHTER CONFORMATION		
TYPE MERIT	+0.4	EXCELLENT
MAMMARY	+0.8	EXCELLENT
LEGS & FEET	+0	EXCELLENT
STATURE	+0.1	154CM
CHEST WIDTH	-0.2	WIDE
BODY DEPTH	+0.2	DEEP
ANGULARITY	+0.6	OPEN RIB
RUMP ANGLE	-0.5	LOW PINS
RUMP WIDTH	+0.7	WIDE
REAR LEG SIDE	-0.3	SICKLED
FOOT ANGLE	+0.3	STEEP
FORE UDDER ATT	+0.4	TIGHT
REAR UDDER HT	+0.8	VERY HIGH
UDDER SUPPORT	+0.7	STRONG
UDDER DEPTH	+0.3	20CM ABOVE
FRONT TREAT PL.	+0.7	CLOSE
TEAT LENGTH	+0.1	LONG

A young sire that is from a very strong family in the Beechmount herd. Magic Mike's 5 direct dams have all scored excellent and produced big milk yields. His maternal sister has recently classified VG86 as a 2-year-old which further adds to the fantastic breeding potential that this family has. Magic Mike himself is a fantastic looking bull who exhibits power and dairyness throughout, alongside great feet and legs.

HUNNINGTON FANTASY

EXPORT READY
Sexed **ULTRA 4M**

Genomic
Sire



Dam: Hunnington Fragy 12 EX97 8E



PGDam: Sandyford Clover 10 EX97 8E



G.Dam: Hunnington Fragy 4 EX94 3E



Maternal Sister: Hunnington Fragy 16 EX96 5E

AYR % 87.5	PEDIGREE SANDYFORD SUPREME X EX97 HUNNINGTON BBK EASLAD X EX94 BROCKLEHILL HARVEST GOLD X EX BROCKLEHILL HAPPY SPIRIT X EX PANT OUTLAW	
BREED CODE 03	HERD BOOK NUMBER 03000007191600	D.O.B. 01/12/2019

PRODUCTION PROOF

PLI	-£43
MILK KG	-106
FAT KG	-3
FAT %	0.02
PROTEIN KG	-1.2
PROTEIN %	0.04
RELIABILITY	49%
DAUGHTERS	0
HERDS	0

YOUNG GENOMIC INDEX (12/21)

MANAGEMENT

SOMATIC CELL COUNT	6
LIFESPAN	15
FERTILITY INDEX	-1.5

DAUGHTER CONFORMATION			
TYPE MERIT	+0.6		EXCELLENT
MAMMARY	+0.8		EXCELLENT
LEGS & FEET	+0.3		EXCELLENT
STATURE	+0.4		154CM
CHEST WIDTH	+0.1		WIDE
BODY DEPTH	+0.6		DEEP
ANGULARITY	+0.1		OPEN RIB
RUMP ANGLE	-0.3		LOW PINS
RUMP WIDTH	+0.5		WIDE
REAR LEG SIDE	+0.2		SICKLED
FOOT ANGLE	-0.3		STEEP
FORE UDDER ATT	+0.9		TIGHT
REAR UDDER HT	+0.4		VERY HIGH
UDDER SUPPORT	+0.8		STRONG
UDDER DEPTH	+0.8		20CM ABOVE
FRONT TREAT PL.	+1.3		CLOSE
TEAT LENGTH	-1.5		LONG

Hunnington Fantasy is bred from the amazing Fragy family at Hunnington known for high type alongside high production. Add Sandyford Clover 10 blood lines to the pedigree making it one of the best pedigrees in the world. His dam Fragy 12 has recently completed 100 tonnes of milk and is still milking today in the Hunnington herd. Fantasy's maternal sister has recently classified EX96 after her win at the UK Dairy Day Show.

WHITECROFT PANELL A2/A2



Daughter: Whitecroft Panell Bella 59



Daughter: Whitecroft Emmie



Dam: Whitecroft Nellie 49 EX94 (4E)

AYR % 93.75		PEDIGREE HARESFOOT PANACHE X EX94 JELYCA OBLIQUE X EX94 CELANDINE FIRST LORD X EX94 STRETTON TRIPLE PRIME	
BREED CODE 03	HERD BOOK NUMBER 000006182328	D.O.B. 19.10.17	
PRODUCTION PROOF			
PLI	£150		
MILK KG	27		
FAT KG	10.5		
FAT %	0.15		
PROTEIN KG	2.8		
PROTEIN %	0.03		
RELIABILITY	49%		
DAUGHTERS	0		
HERDS	0		
YOUNG GENOMIC INDEX (12/21)			
MANAGEMENT			
SOMATIC CELL COUNT	-4		
LIFESPAN	54		
FERTILITY INDEX	-3.8		

DAUGHTER CONFORMATION			
TYPE MERIT	+0.2		EXCELLENT
MAMMARY	+0.6		EXCELLENT
LEGS & FEET	-0.1		EXCELLENT
STATURE	+0.2		154CM
CHEST WIDTH	+0.1		WIDE
BODY DEPTH	+0.4		DEEP
ANGULARITY	+0.2		OPEN RIB
RUMP ANGLE	-0.4		LOW PINS
RUMP WIDTH	+0.1		WIDE
REAR LEG SIDE	-1.2		SICKLED
FOOT ANGLE	+0.9		STEEP
FORE UDDER ATT	+0.5		TIGHT
REAR UDDER HT	+0.8		VERY HIGH
UDDER SUPPORT	+0.3		STRONG
UDDER DEPTH	-0.4		20CM ABOVE
FRONT TREAT PL.	+0.2		CLOSE
TEAT LENGTH	-0.2		LONG

Panell is bred from the great Nellie family at Whitecroft.
His first daughters will be calving this winter. They are showing the quality of rump and legs and feet which have made the Nellie family so successful. With breeders already repeat ordering this sire, he could be what you're looking for to breed open framed great rumped easy moving youngstock. He also has the added bonus of great health traits combined with production and high components.



CHAPELTON DIADEM

Sire: Mogeely Junior M207
 Dam: Chapelton Diamond Mist P926
 MGS: Hurdcott Brandon L412
 Ear: UK582662305608 AI Code: AA1505

EMI	CBI	MVI
£62.73	£100.93	£38.21

GESTATION LENGTH (D)	Longer	285	280	Shorter
CALVING EASE (%)	Harder	92	98.0	Easier
CALF VIGOUR (UNITS)	- Vigorous	1	1.40	+ Vigorous
CALF QUALITY (%)	Poorer	80	99.0	Excellent
BIRTH WEIGHT (KG)	Lighter	0	-0.10	Heavier



KELNOWA JOHNNEY

Sire: Dinmore Gaultier
 Dam: Kelowna Fennel
 MGS: As De Trefle Du Vanova
 Ear: UK102530401020 AI Code: BB1403



EMI	CBI	MVI
£40.53	£60.95	£20.42



GESTATION LENGTH (D)	Longer	285	281	Shorter
CALVING EASE (%)	Harder	92	97.3	Easier
CALF VIGOUR (UNITS)	- Vigorous	1	1.70	+ Vigorous
CALF QUALITY (%)	Poorer	80	72.7	Excellent
BIRTH WEIGHT (KG)	Lighter	0	0.60	Heavier



Contact: Sam Wake: 07803 515626 Office: 01292 471292
Email: sales@cattleservices.org www.cattleservices.org